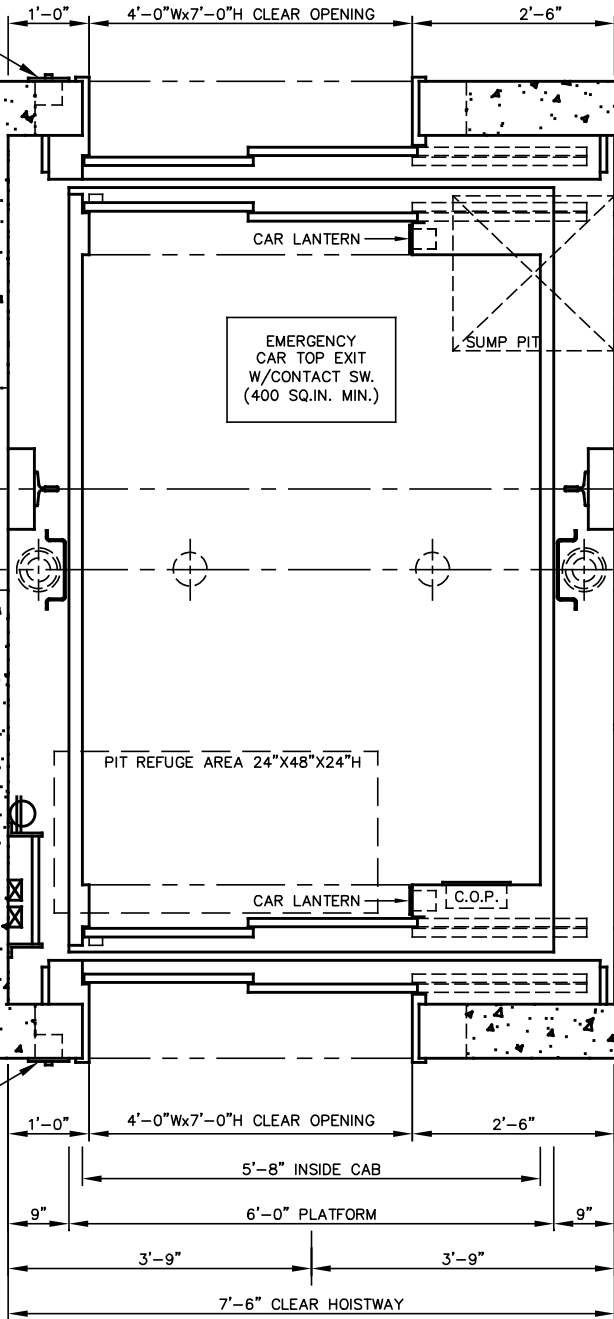


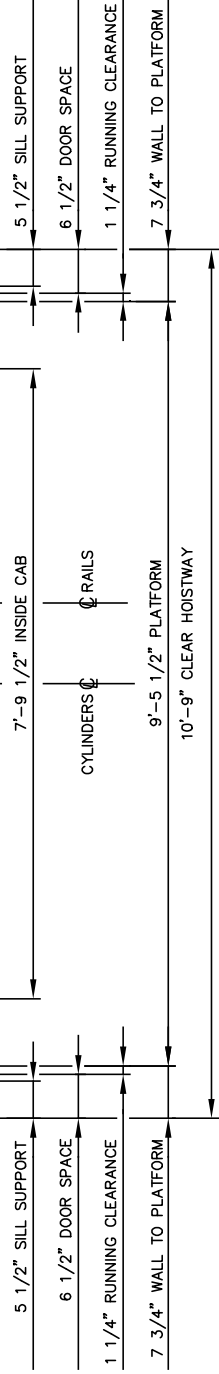
HALL PUSH
BUTTON

RAIL
BRACKET INSERT

HALL PUSH
BUTTON



PLATFORM

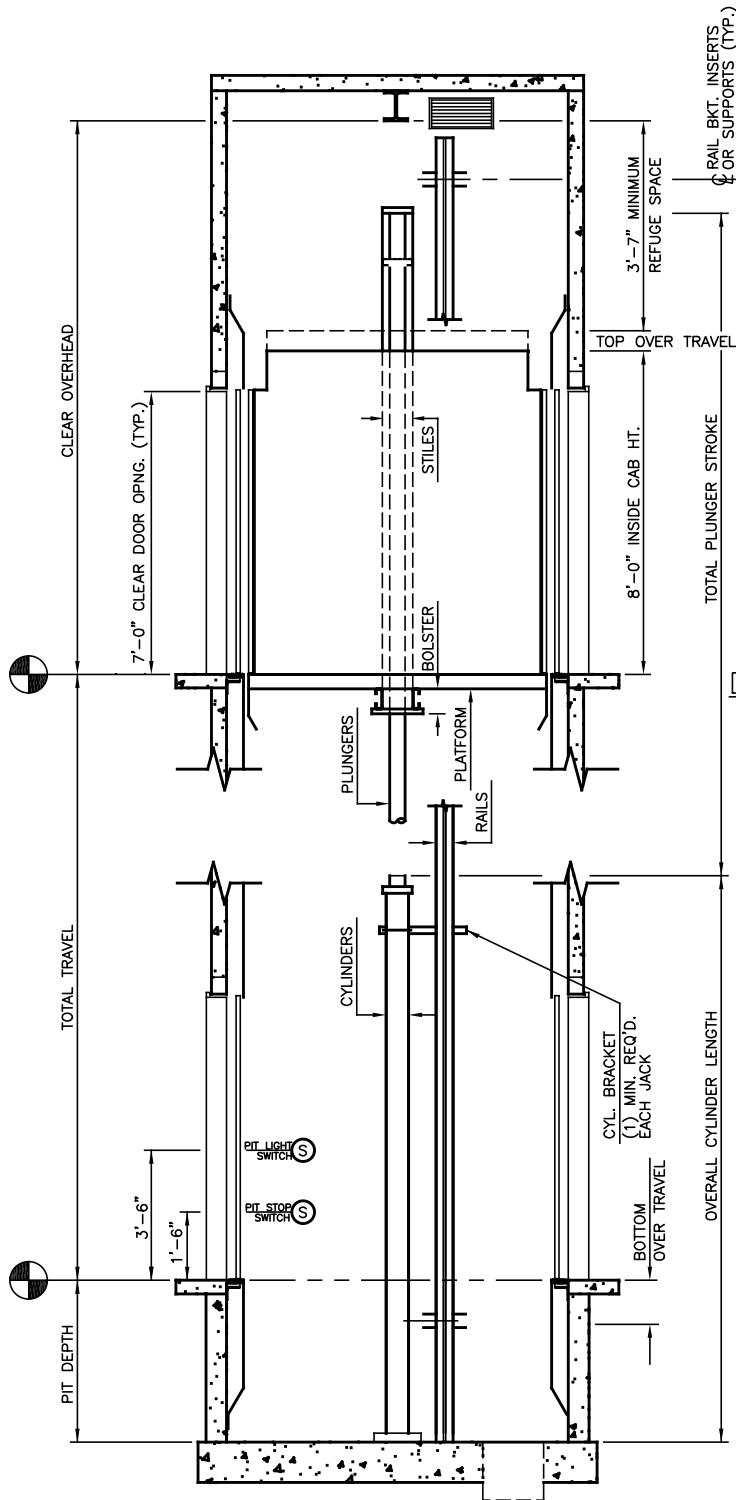


NOTE
 1. IF > 30' OF TRAVEL THEN AN
 ADDITIONAL 2" OF HOISTWAY WIDTH IS
 REQUIRED FOR LARGER JACKS.

HOISTWAY PLAN

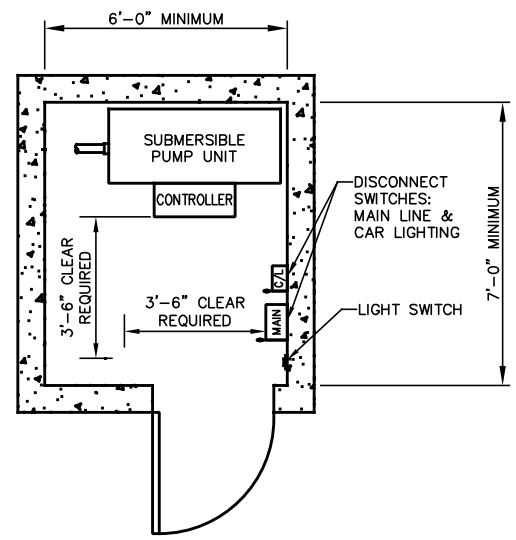
TWIN HOLELESS HYDRAULIC JACK
 4500 LB 2SSO FRONT & REAR
NOT FOR CONSTRUCTION

ALLIANCE
 ELEVATOR SOLUTIONS
 237 OREGON ST.
 MERCERSBURG, PA 17236



SECTION "A"

NOT FOR CONSTRUCTION



MACHINE ROOM

DEFAULT IS ADJACENT ON LOWEST LANDING

MINIMUM OVERHEAD CHART

JACK STAGES	MIN OVERHEAD Ø100 FPM	MIN OVERHEAD Ø125 FPM	PIT DEPTH
1	12'-8"	12'-9"	4'-0"
2	13'-6"	13'-6"	4'-0"
3	13'-6"	13'-6"	5'-0"

ALLIANCE
ELEVATOR SOLUTIONS
237 OREGON ST.
MERCERSBURG, PA 17236

N.T.S.	2 OF 2	2020
--------	--------	------