

NOTE

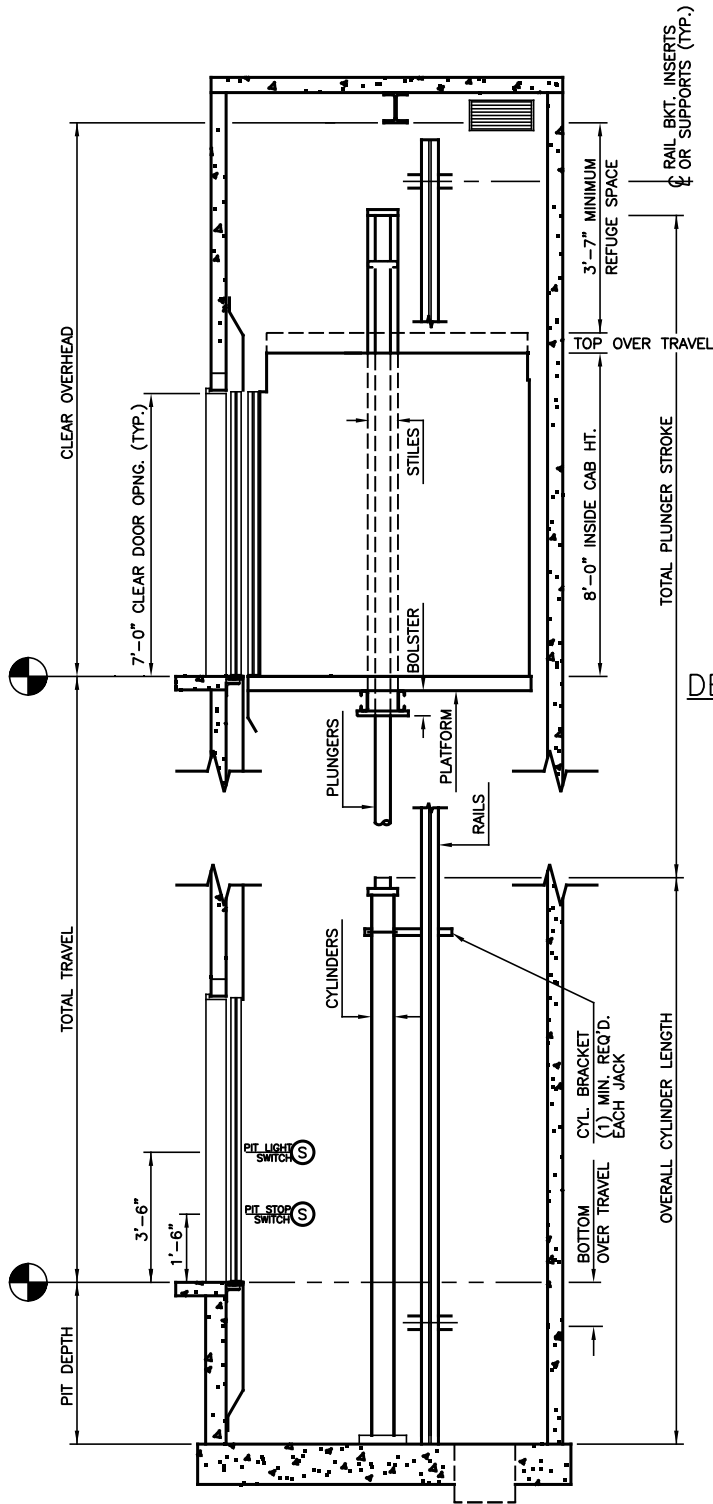
1. IF > 30' OF TRAVEL THEN AN ADDITIONAL 2" OF HOISTWAY WIDTH IS REQUIRED FOR LARGER JACKS.
2. THIS CAR IS 24"x84" GURNEY COMPLIANT.

HOISTWAY PLAN

TWIN HOLELESS HYDRAULIC JACK
4500 LB 2SSO (LH)

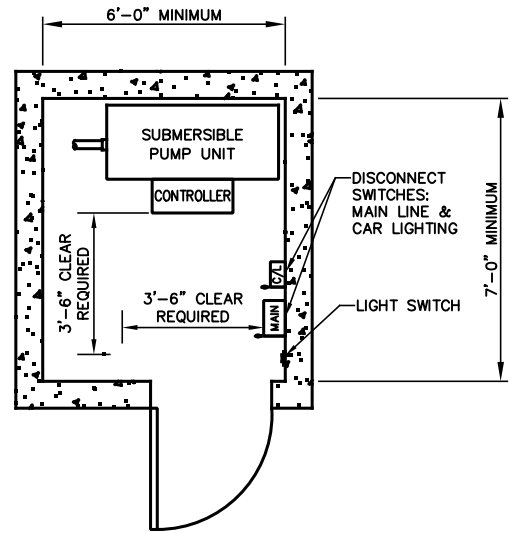
NOT FOR CONSTRUCTION

ALLIANCE
ELEVATOR SOLUTIONS
335 NOVA DR.
GREENCASTLE, PA 17225



SECTION "A"

NOT FOR CONSTRUCTION



MACHINE ROOM

DEFAULT IS ADJACENT ON LOWEST LANDING

MINIMUM OVERHEAD CHART

JACK STAGES	MIN OVERHEAD Ø100 FPM	MIN OVERHEAD Ø125 FPM	PIT DEPTH
1	12'-8"	12'-9"	4'-0"
2	13'-6"	13'-6"	4'-0"
3	13'-6"	13'-6"	5'-0"


ALLIANCE
 ELEVATOR SOLUTIONS
 335 NOVA DR.
 GREENCASTLE, PA 17225

N.T.S.	2 OF 2	2023
--------	--------	------