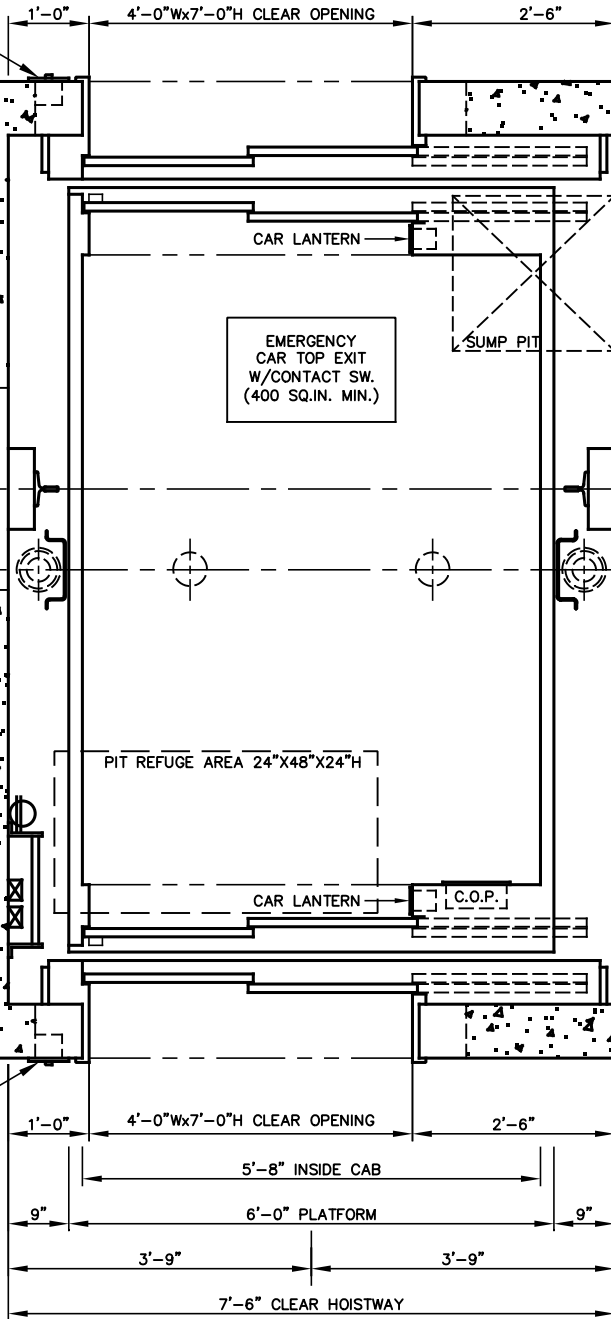


HALL PUSH  
BUTTON

RAIL  
BRACKET  
INSERT

HALL PUSH  
BUTTON

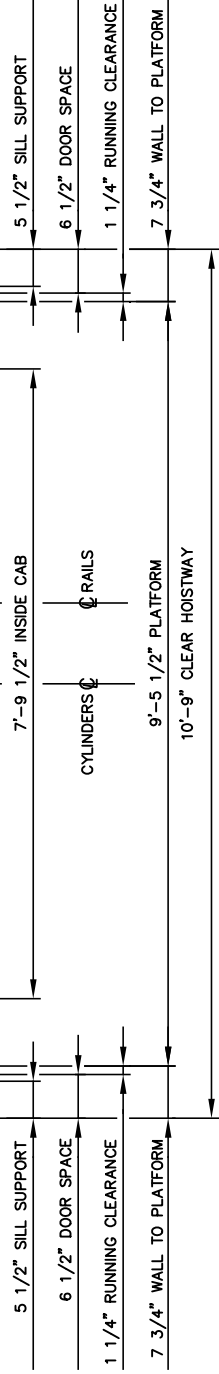


PLATFORM



# HOISTWAY PLAN

TWIN HOLELESS HYDRAULIC JACK  
 4500 LB 2SSO FRONT & REAR  
**NOT FOR CONSTRUCTION**



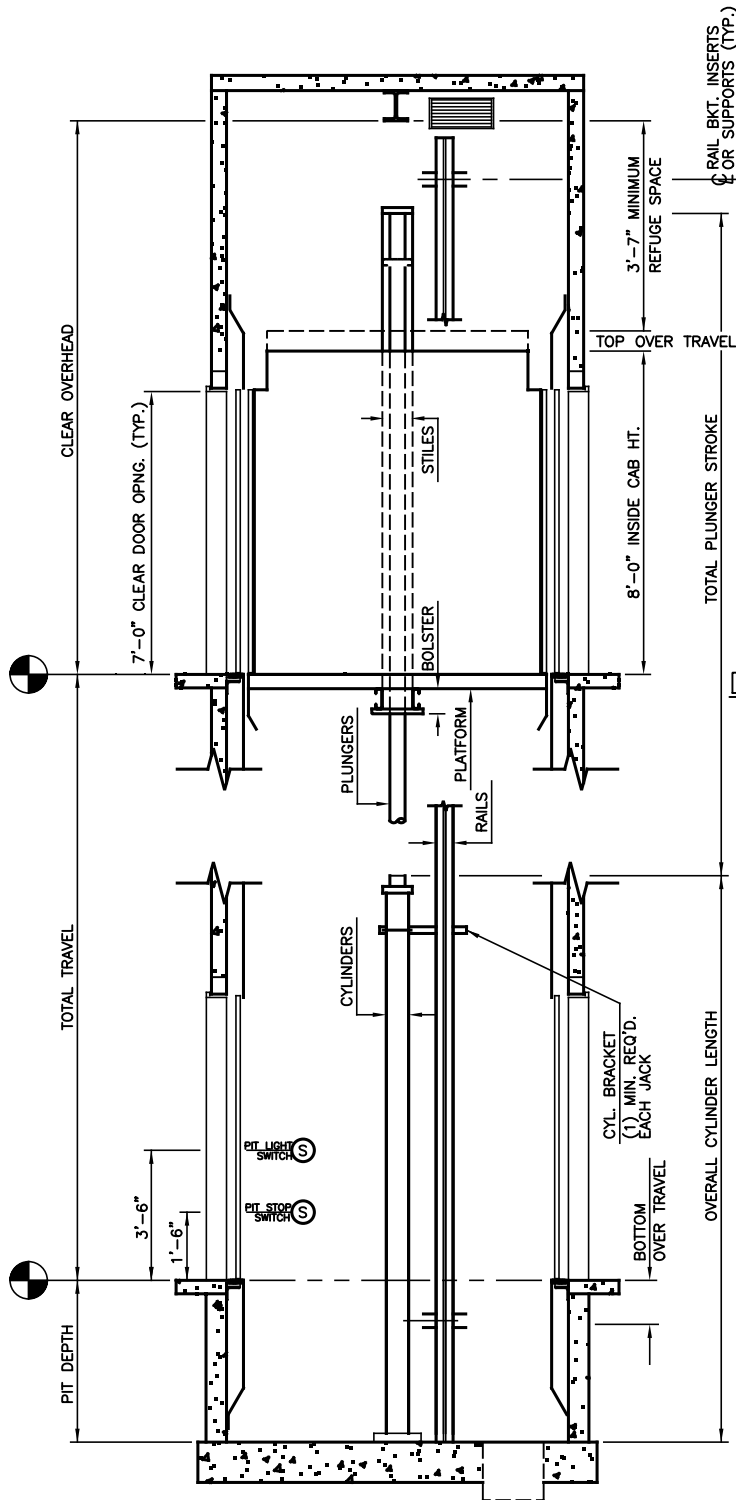
### NOTE

1. IF > 30' OF TRAVEL THEN AN ADDITIONAL 2" OF HOISTWAY WIDTH IS REQUIRED FOR LARGER JACKS.
2. THIS CAR IS 24"x84" GURNEY COMPLIANT.

## ALLIANCE

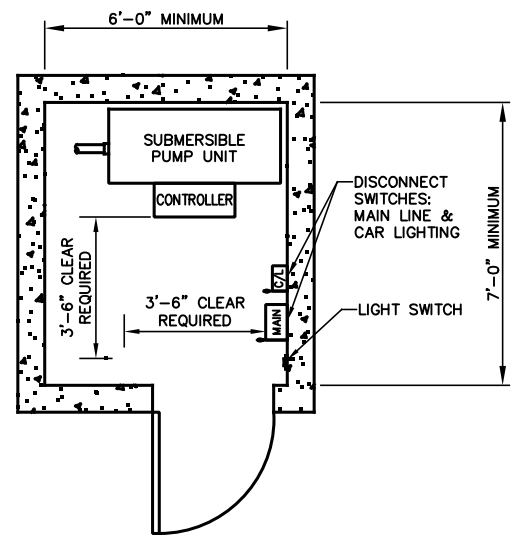
ELEVATOR SOLUTIONS  
 335 NOVA DR.  
 GREENCASTLE, PA 17225

N.T.S.	1 OF 2	2023
--------	--------	------



SECTION "A"

NOT FOR CONSTRUCTION



MACHINE ROOM

DEFAULT IS ADJACENT ON LOWEST LANDING

MINIMUM OVERHEAD CHART

JACK STAGES	MIN OVERHEAD Ø100 FPM	MIN OVERHEAD Ø125 FPM	PIT DEPTH
1	12'-8"	12'-9"	4'-0"
2	13'-6"	13'-6"	4'-0"
3	13'-6"	13'-6"	5'-0"

**ALLIANCE**  
 ELEVATOR SOLUTIONS  
 335 NOVA DR.  
 GREENCASTLE, PA 17225

N.T.S.	2 OF 2	2023
--------	--------	------