

- NOTES
1. IF > 30' OF TRAVEL THEN AN ADDITIONAL 2" OF HOISTWAY WIDTH IS REQUIRED FOR LARGER JACKS.
 2. POWER UNIT AND ACCESS DOOR SIZES WILL VARY BASED ON MAX TRAVEL AND MOTOR HP.
 3. IF ALTERNATE DOOR ARRANGEMENTS ARE REQUIRED, CONTACT YOUR AES REP FOR DIFFERENT MACHINE ACCESS LOCATION.
 4. THIS CAR IS 24"x84" GURNEY COMPLIANT.

HOISTWAY PLAN

TWIN HOLELESS HYDRAULIC JACK
 4500 LB 2SSO F&R
 HYDRO MRL EDA DESIGN

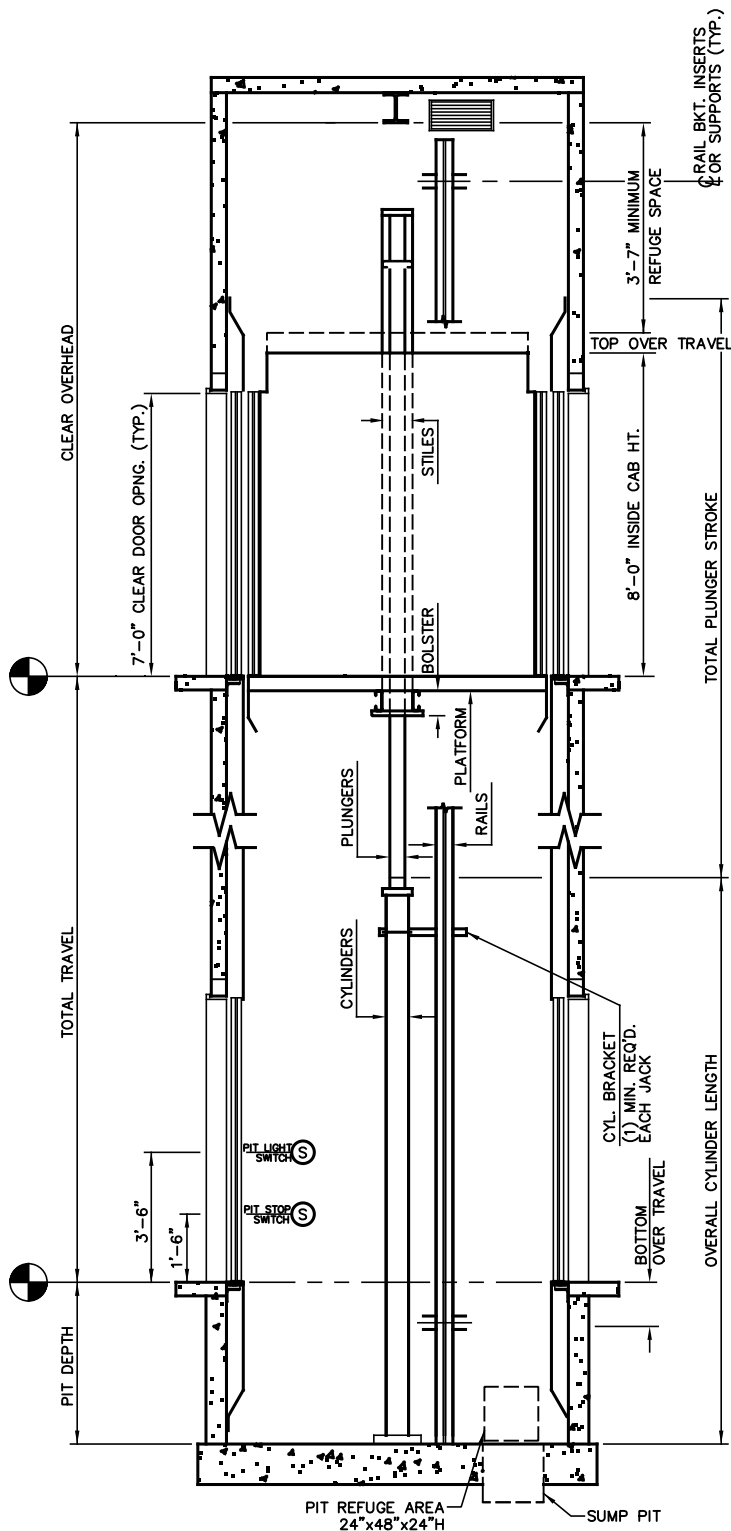
NOT FOR CONSTRUCTION

ALLIANCE

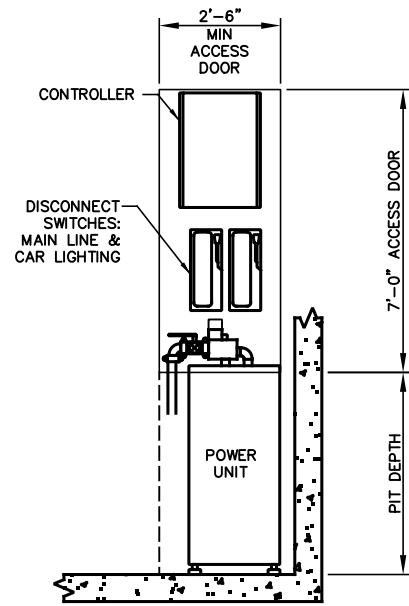
ELEVATOR SOLUTIONS

335 NOVA DR.
 GREENCASTLE, PA 17225

N.T.S.	1 OF 2	2023
--------	--------	------



SECTION "A"
 NOT FOR CONSTRUCTION



ACCESS DOOR
 DETAIL
 (HALF SCALE)

MINIMUM OVERHEAD CHART

JACK STAGES	MIN OVERHEAD Ø100 FPM	MIN OVERHEAD Ø125 FPM	PIT DEPTH
1	12'-7"	12'-8"	5'-0"
2	13'-1"	13'-5"	5'-0"
3	13'-1"	13'-5"	5'-0"

NOTE: 5' PIT DEPTH RECOMMENDED FOR ALL EDA ARRANGEMENTS. 5' PIT DEPTH REQUIRED FOR 3-STAGE JACKS. CONTACT YOUR AES REP IF LESS THAN 5' PIT DEPTH IS REQUIRED.

ALLIANCE
 ELEVATOR SOLUTIONS
 335 NOVA DR.
 GREENCASTLE, PA 17225

N.T.S.	2 OF 2	2023
--------	--------	------