

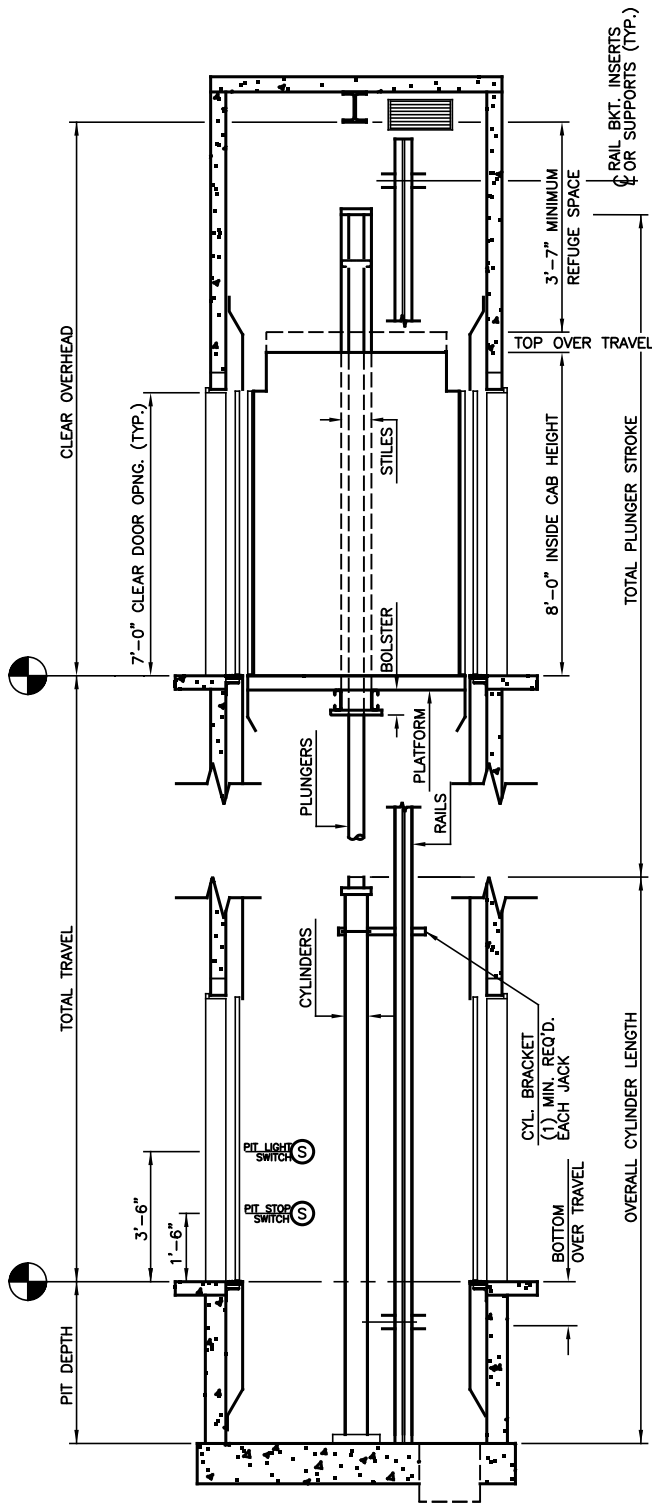
NOTE
 1. IF > 30' OF TRAVEL THEN AN ADDITIONAL 2" OF HOISTWAY WIDTH IS REQUIRED FOR LARGER JACKS.
 2. THIS CAR IS NOT 24"x84" GURNEY COMPLIANT.

HOISTWAY PLAN

TWIN HOLELESS HYDRAULIC JACK
 2100 LB SSSO FRONT & REAR

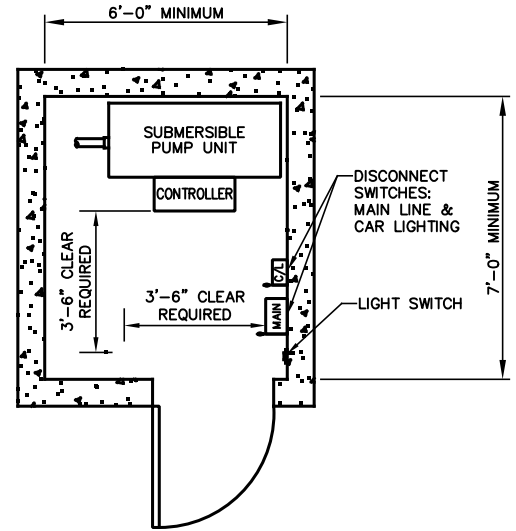
NOT FOR CONSTRUCTION

 ALLIANCE ELEVATOR SOLUTIONS 335 NOVA DR. GREENCASTLE, PA 17225		
N.T.S.	1 OF 2	2023



SECTION "A"

NOT FOR CONSTRUCTION



MACHINE ROOM

DEFAULT IS ADJACENT ON LOWEST LANDING

MINIMUM OVERHEAD CHART

JACK STAGES	MIN OVERHEAD Ø100 FPM	MIN OVERHEAD Ø125 FPM	PIT DEPTH
1	12'-2"	12'-4"	4'-0"
2	13'-6"	13'-6"	4'-0"
3	13'-6"	13'-6"	5'-0"

ALLIANCE

ELEVATOR SOLUTIONS

335 NOVA DR.

GREENCASTLE, PA 17225

N.T.S.

2 OF 2

2023