

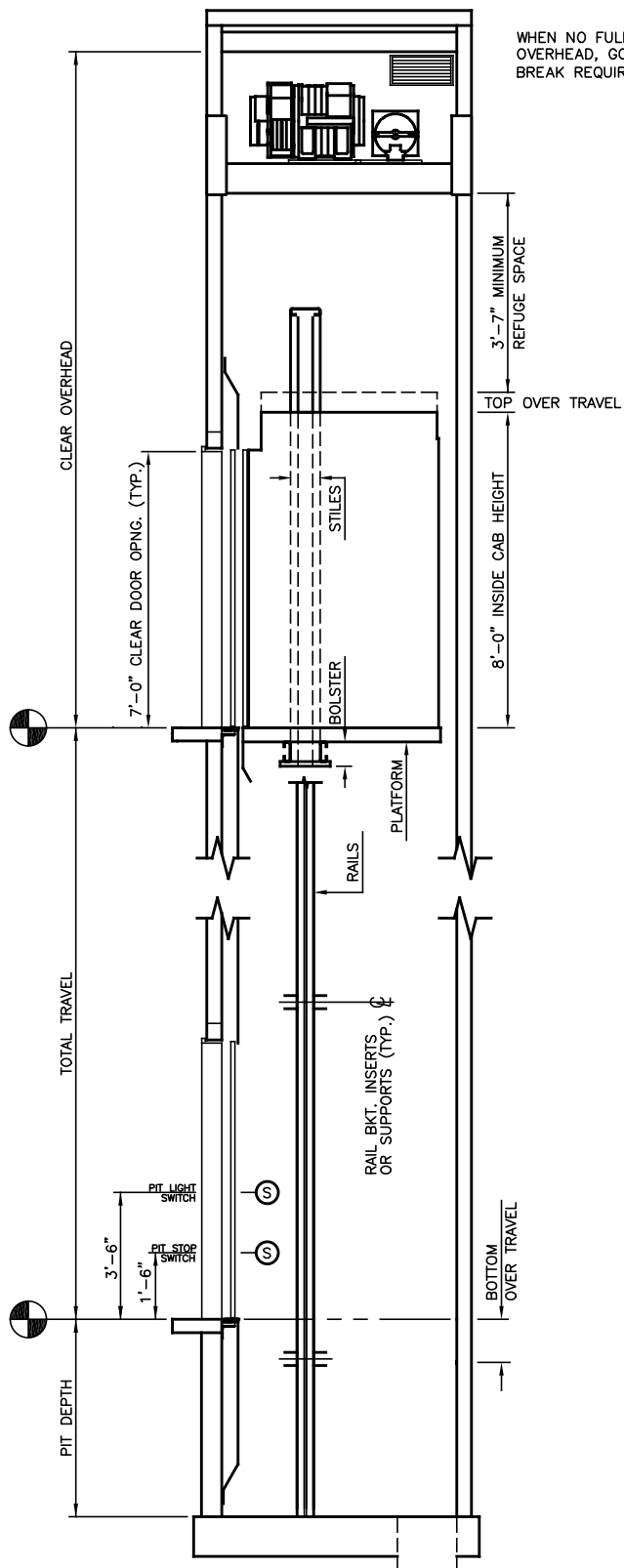
OVERHEAD  
MACHINE DETAIL

HOISTWAY PLAN

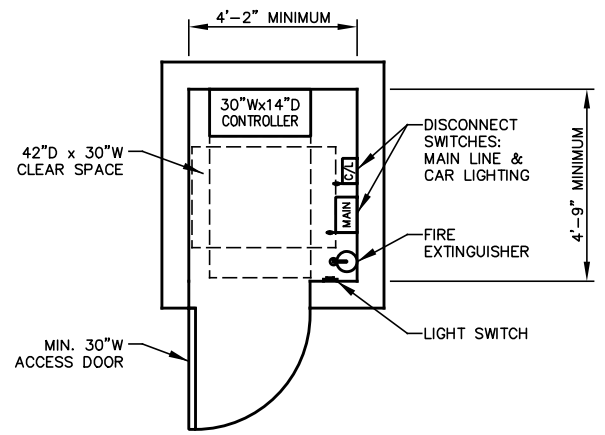
TRACTION MRL:  
BLDG SUPPORTED  
4000 LB 2SS0 (RH)

**NOT FOR CONSTRUCTION**

**ALLIANCE**  
ELEVATOR SOLUTIONS  
237 OREGON ST.  
MERCERSBURG, PA 17236



WHEN NO FULLY BODY ENTRY INTO OVERHEAD, GOVERNOR AND MACHINE BREAK REQUIRE 24" x 24" ACCESS DOOR



# CONTROLLER ROOM

BY DEFAULT CONTROLLER ROOM IS LOCATED ON THE TOP LANDING ADJACENT TO THE HOISTWAY

## SECTION "A"

**NOT FOR CONSTRUCTION**

PIT & OVERHEAD BASED ON CAR SPEED AND CAPACITY

SPEED (FPM)	PIT	CAPACITY (LB)				
		2100	2500	3000	3500	4000-5000
100	5'-0"	15'-6"	15'-6"	15'-11"	15'-11"	15'-8"
150	5'-0"	15'-6"	15'-6"	15'-11"	15'-11"	15'-8"
200	5'-0"	16'-0"	16'-0"	16'-0"	16'-0"	15'-9"
250	5'-6"	16'-1"	16'-1"	16'-1"	16'-1"	15'-10"
300	5'-6"	16'-2"	16'-2"	16'-2"	16'-2"	15'-11"
350	5'-6"	16'-8"	16'-8"	16'-8"	16'-8"	16'-5"
400*	5'-9"	16'-9"	16'-9"	16'-9"	16'-9"	16'-10"
450*	6'-3"	16'-10"	16'-10"	16'-10"	16'-10"	17'-0"
500*	6'-3"	17'-6"	17'-6"	17'-6"	17'-6"	17'-9"

NOTE: OIL BUFFERS REQUIRED FOR CAR SPEED ABOVE 200 FPM. SPRING BUFFERS MAY BE USED FOR 200 FPM AND BELOW.

\*FOR 4000-5000 LB CARS 3" ADDITIONAL PIT REQUIRED.

# ALLIANCE

ELEVATOR SOLUTIONS

237 OREGON ST.

MERCERSBURG, PA 17236

N.T.S.	2 OF 2	2020
--------	--------	------