

NOTE  
 1. IF > 30' OF TRAVEL THEN AN ADDITIONAL 2" OF HOISTWAY WIDTH IS REQUIRED FOR LARGER JACKS.

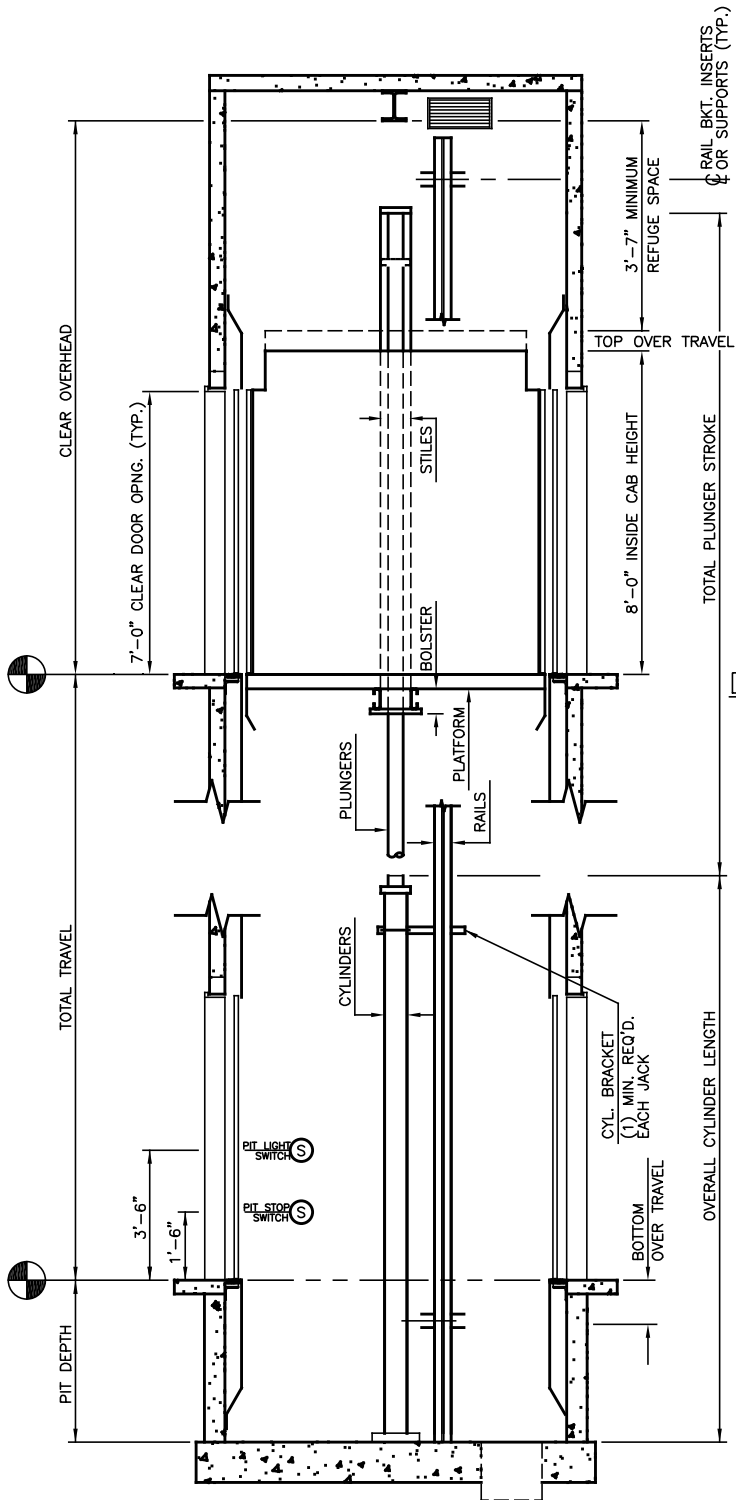
# HOISTWAY PLAN

TWIN HOLELESS HYDRAULIC JACK  
 4000 LB 2SSO FRONT & REAR

**NOT FOR CONSTRUCTION**

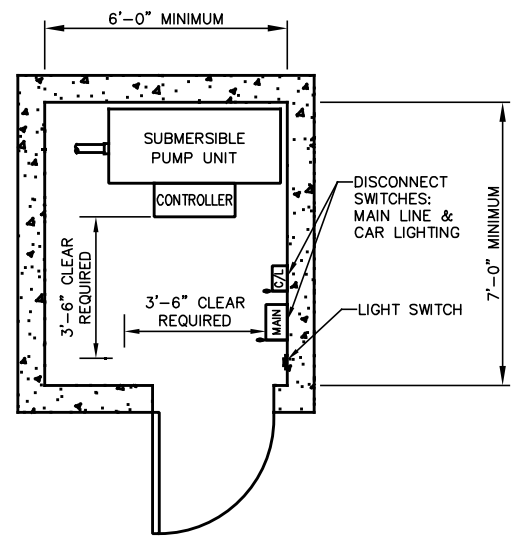
**ALLIANCE**  
 ELEVATOR SOLUTIONS  
 237 OREGON ST.  
 MERCERSBURG, PA 17236

N.T.S.	1 OF 2	2020
--------	--------	------



**SECTION "A"**

**NOT FOR CONSTRUCTION**



**MACHINE ROOM**

DEFAULT IS ADJACENT ON LOWEST LANDING

**MINIMUM OVERHEAD CHART**

JACK STAGES	MIN OVERHEAD Ø100 FPM	MIN OVERHEAD Ø125 FPM	PIT DEPTH
1	12'-8"	12'-9"	4'-0"
2	13'-6"	13'-6"	4'-0"
3	13'-6"	13'-6"	5'-0"

**ALLIANCE**  
ELEVATOR SOLUTIONS

237 OREGON ST.  
MERCERSBURG, PA 17236

N.T.S.	2 OF 2	2020
--------	--------	------