

NOTE

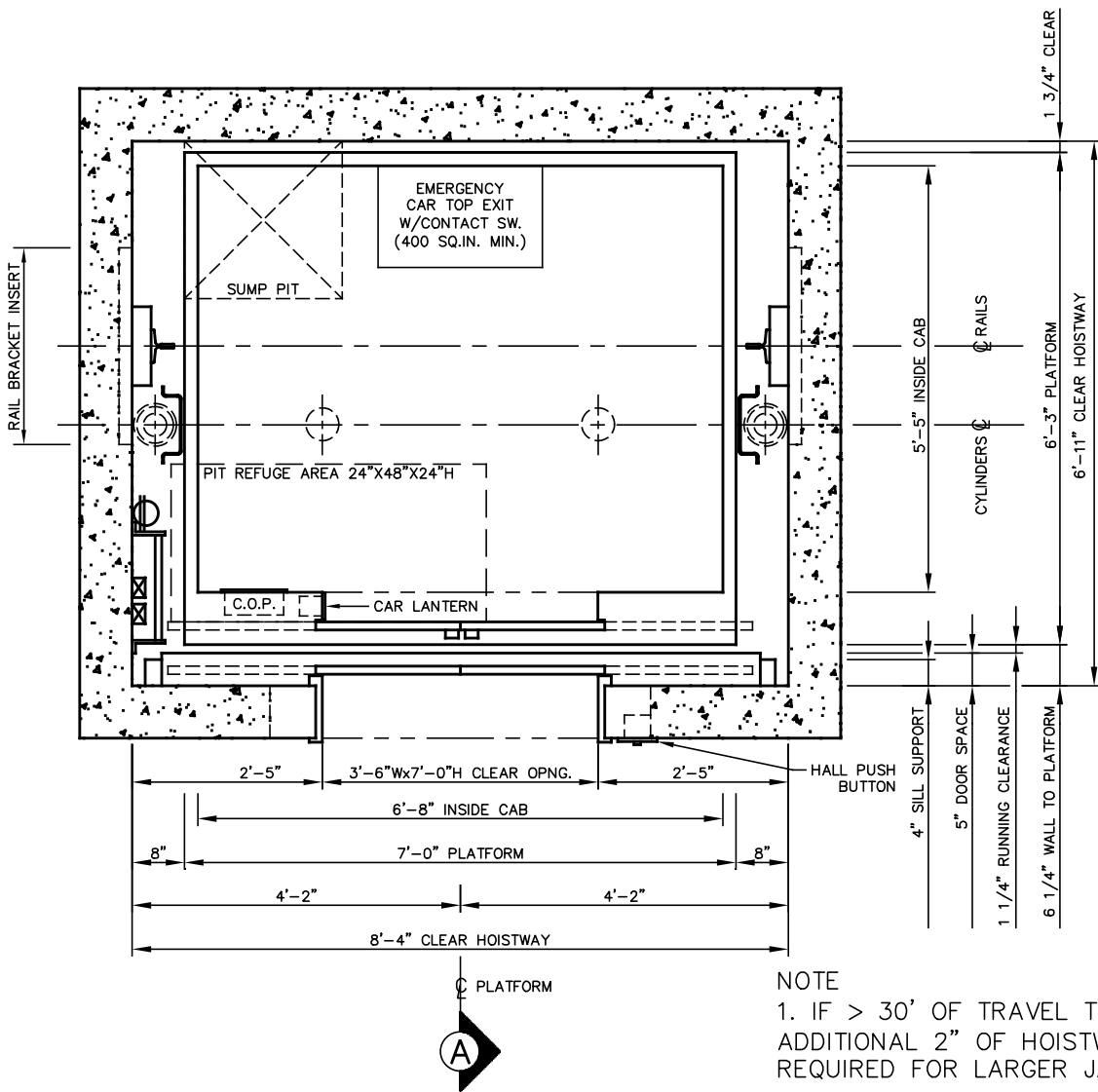
1. IF > 30' OF TRAVEL THEN AN ADDITIONAL 2" OF HOISTWAY WIDTH IS REQUIRED FOR LARGER JACKS.

# HOISTWAY PLAN

TWIN HOLELESS HYDRAULIC JACK  
3500 LB SSSO (LH)

**NOT FOR CONSTRUCTION**

|  |        |      |
|--|--------|------|
|  <h2 style="margin: 0;">ALLIANCE</h2> <p style="margin: 0;">ELEVATOR SOLUTIONS</p> <p style="margin: 0;">237 OREGON ST.</p> <p style="margin: 0;">MERCERSBURG, PA 17236</p> |        |      |
| N.T.S.   | 1 OF 3 | 2020 |



NOTE  
 1. IF > 30' OF TRAVEL THEN AN  
 ADDITIONAL 2" OF HOISTWAY WIDTH IS  
 REQUIRED FOR LARGER JACKS.

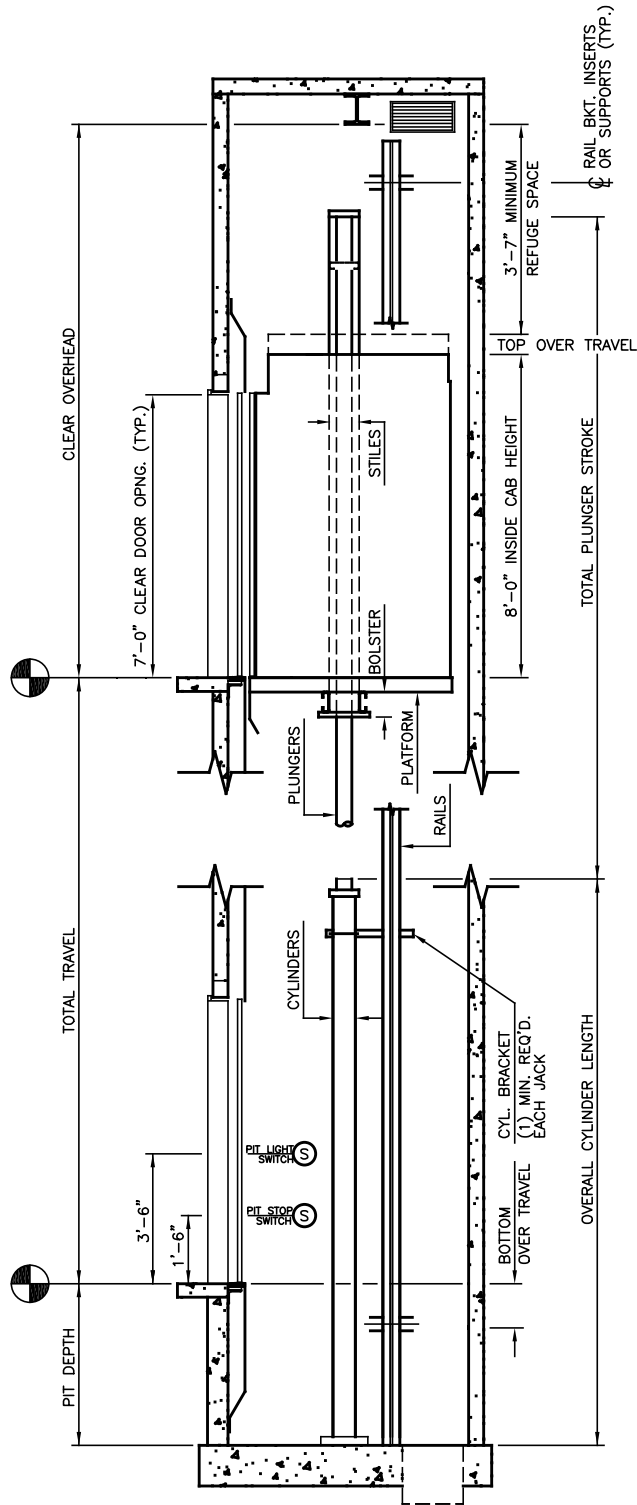
# HOISTWAY PLAN

TWIN HOLELESS HYDRAULIC JACK  
 3500 LBS SSCO

**NOT FOR CONSTRUCTION**

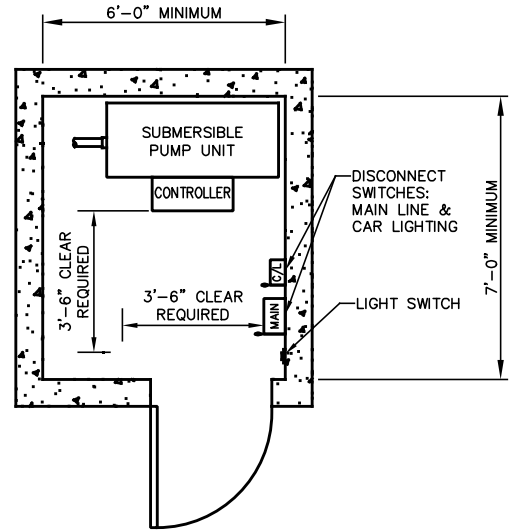
**ALLIANCE**  
 ELEVATOR SOLUTIONS  
 237 OREGON ST.  
 MERCERSBURG, PA 17236

|        |        |      |
|--------|--------|------|
| N.T.S. | 2 OF 3 | 2020 |
|--------|--------|------|



# SECTION "A"

**NOT FOR CONSTRUCTION**



# MACHINE ROOM

DEFAULT IS ADJACENT ON LOWEST LANDING

## MINIMUM OVERHEAD CHART

| JACK STAGES | MIN OVERHEAD<br>Ø100 FPM | MIN OVERHEAD<br>Ø125 FPM | PIT DEPTH |
|-------------|--------------------------|--------------------------|-----------|
| 1           | 12'-8"                   | 12'-9"                   | 4'-0"     |
| 2           | 13'-6"                   | 13'-6"                   | 4'-0"     |
| 3           | 13'-6"                   | 13'-6"                   | 5'-0"     |

# ALLIANCE

ELEVATOR SOLUTIONS

237 OREGON ST.

MERCERSBURG, PA 17236

N.T.S.

3 OF 3

2020