

NOTE
 1. IF > 30' OF TRAVEL THEN AN ADDITIONAL 2" OF HOISTWAY WIDTH IS REQUIRED FOR LARGER JACKS.

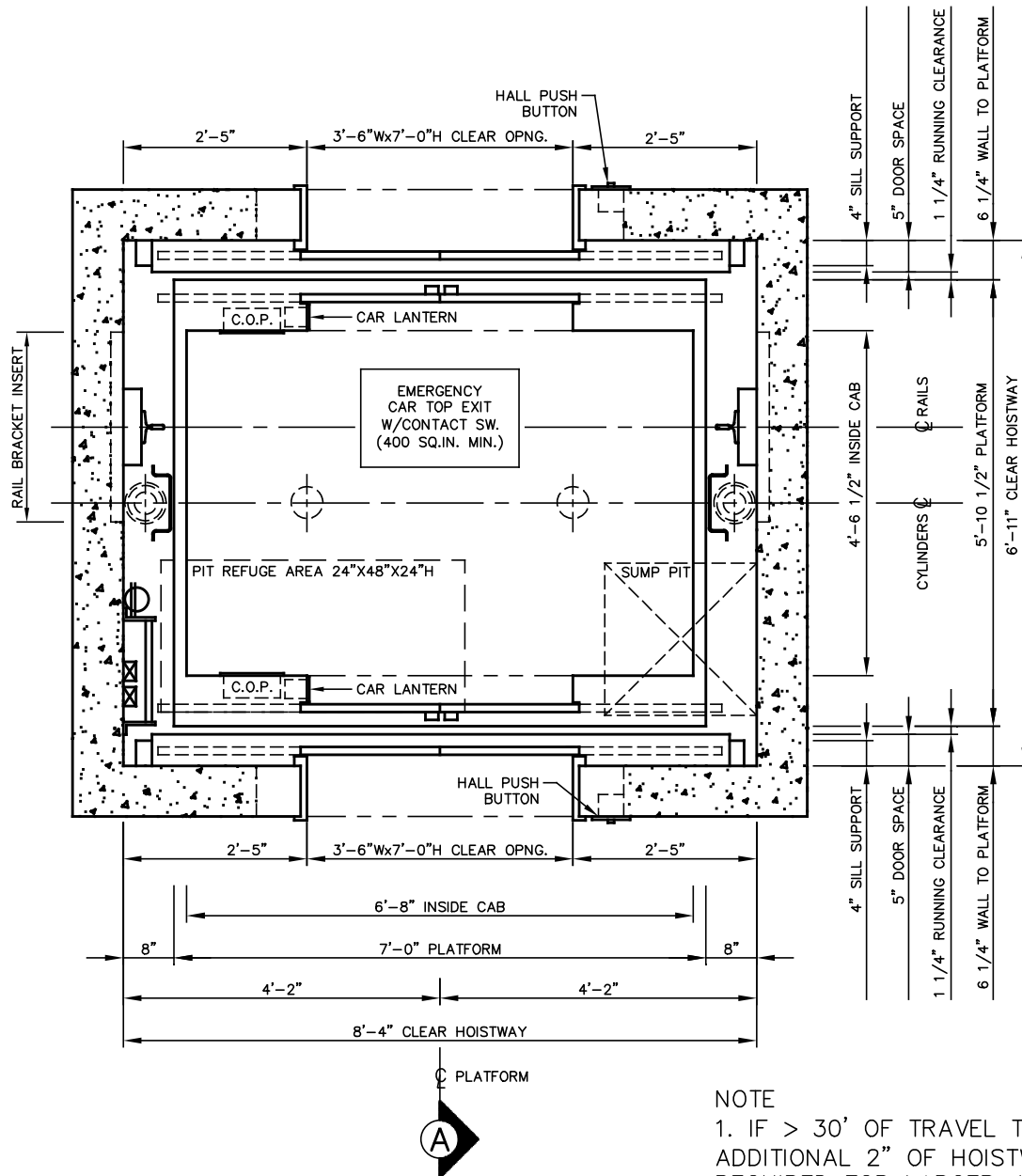
HOISTWAY PLAN

TWIN HOLELESS HYDRAULIC JACK
 3000 LB SSSO FRONT & REAR

NOT FOR CONSTRUCTION

ALLIANCE
 ELEVATOR SOLUTIONS
 237 OREGON ST.
 MERCERSBURG, PA 17236

N.T.S.	1 OF 3	2020
--------	--------	------



NOTE
 1. IF > 30' OF TRAVEL THEN AN ADDITIONAL 2" OF HOISTWAY WIDTH IS REQUIRED FOR LARGER JACKS.

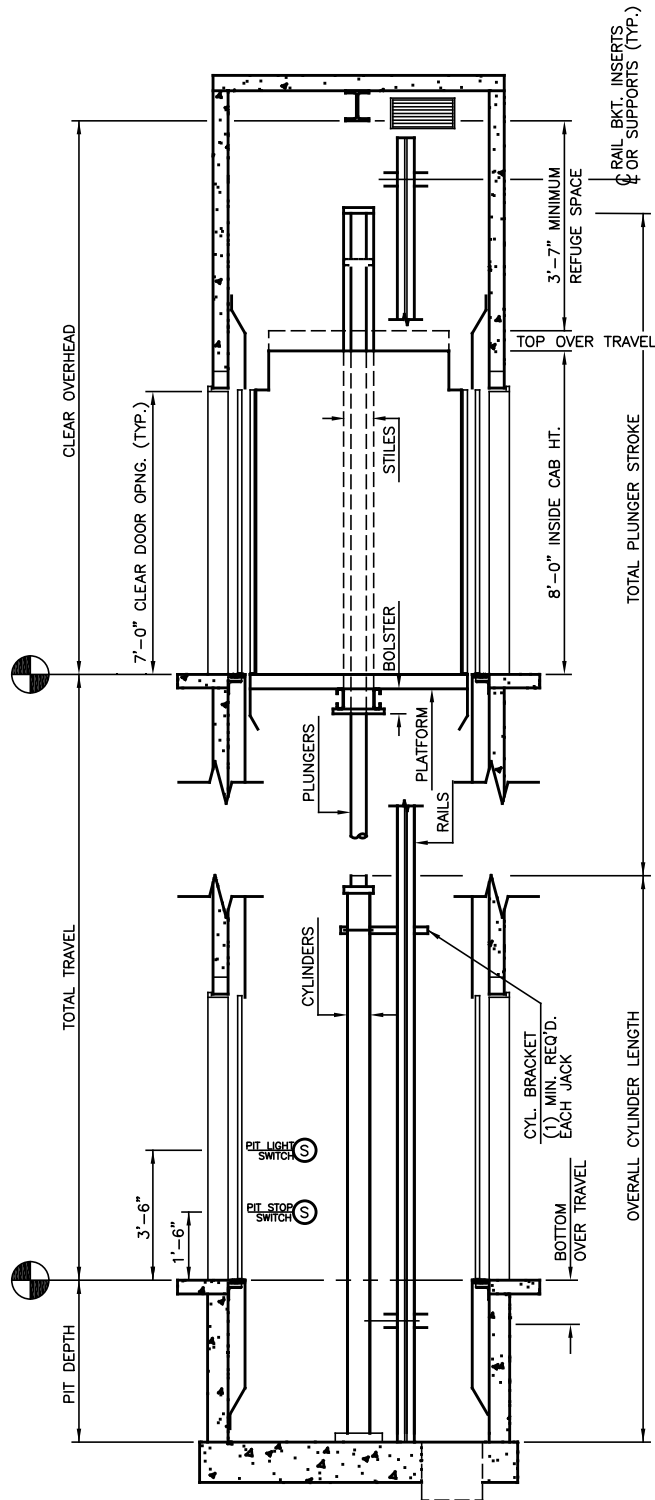
HOISTWAY PLAN

TWIN HOLELESS HYDRAULIC JACK
 3000 LB SSCO FRONT & REAR

NOT FOR CONSTRUCTION

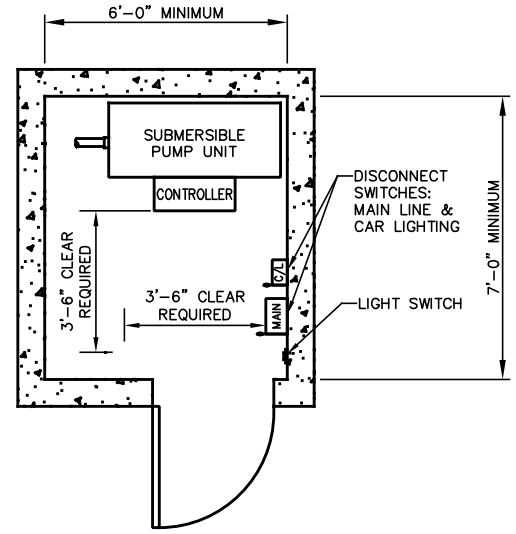
ALLIANCE
 ELEVATOR SOLUTIONS
 237 OREGON ST.
 MERCERSBURG, PA 17236

N.T.S.	2 OF 3	2020
--------	--------	------



SECTION "A"

NOT FOR CONSTRUCTION



MACHINE ROOM

DEFAULT IS ADJACENT ON LOWEST LANDING

MINIMUM OVERHEAD CHART

JACK STAGES	MIN OVERHEAD Ø100 FPM	MIN OVERHEAD Ø125 FPM	PIT DEPTH
1	12'-8"	12'-9"	4'-0"
2	13'-6"	13'-6"	4'-0"
3	13'-6"	13'-6"	5'-0"

ALLIANCE
 ELEVATOR SOLUTIONS
 237 OREGON ST.
 MERCERSBURG, PA 17236

N.T.S.	3 OF 3	2020
--------	--------	------