

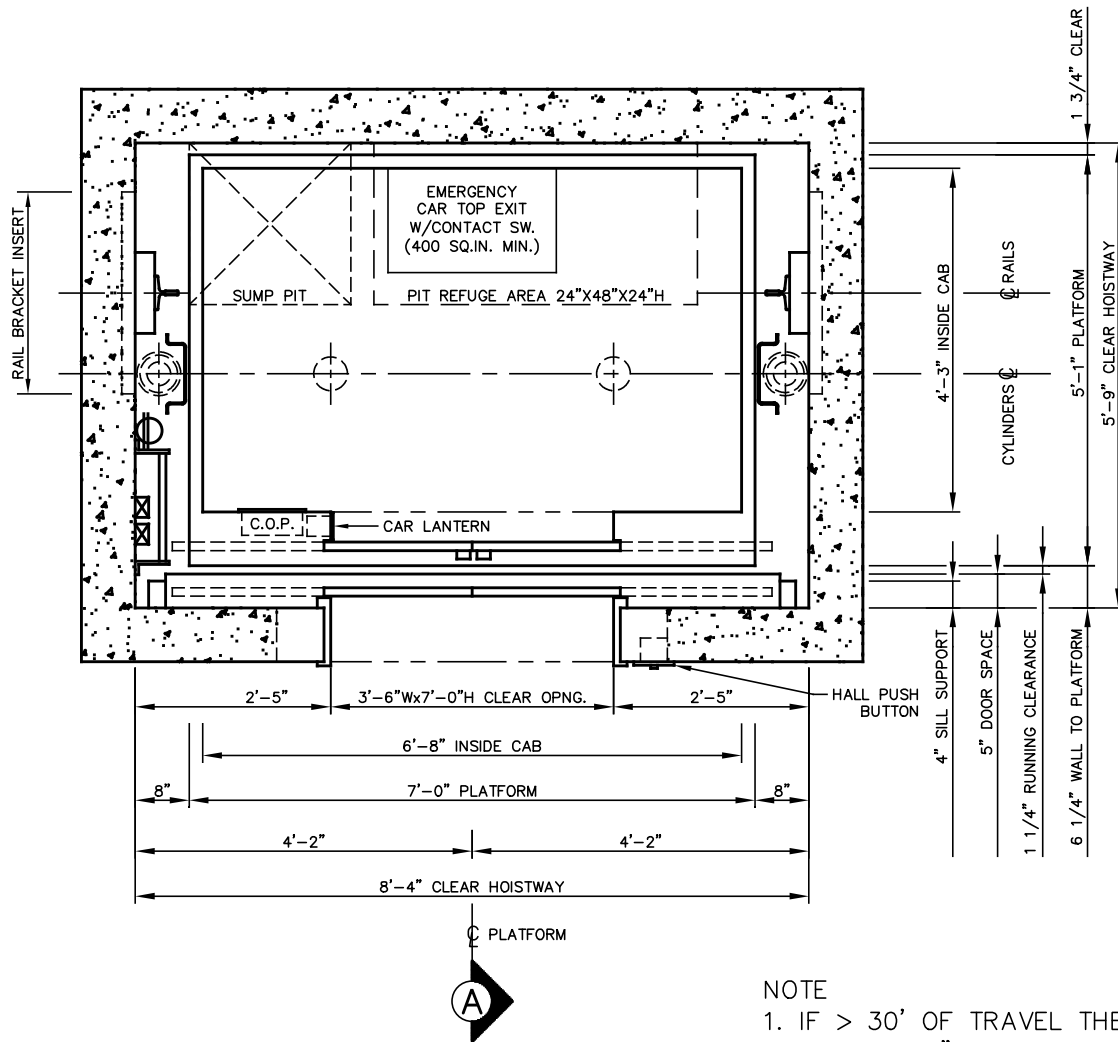
NOTE  
 1. IF > 30' OF TRAVEL THEN AN  
 ADDITIONAL 2" OF HOISTWAY WIDTH IS  
 REQUIRED FOR LARGER JACKS.

# HOISTWAY PLAN

TWIN HOLELESS HYDRAULIC JACK  
 2500 LB SSSO (LH)

**NOT FOR CONSTRUCTION**

 <b>ALLIANCE</b> ELEVATOR SOLUTIONS 237 OREGON ST. MERCERSBURG, PA 17236		
N.T.S.	1 OF 3	2020



**NOTE**

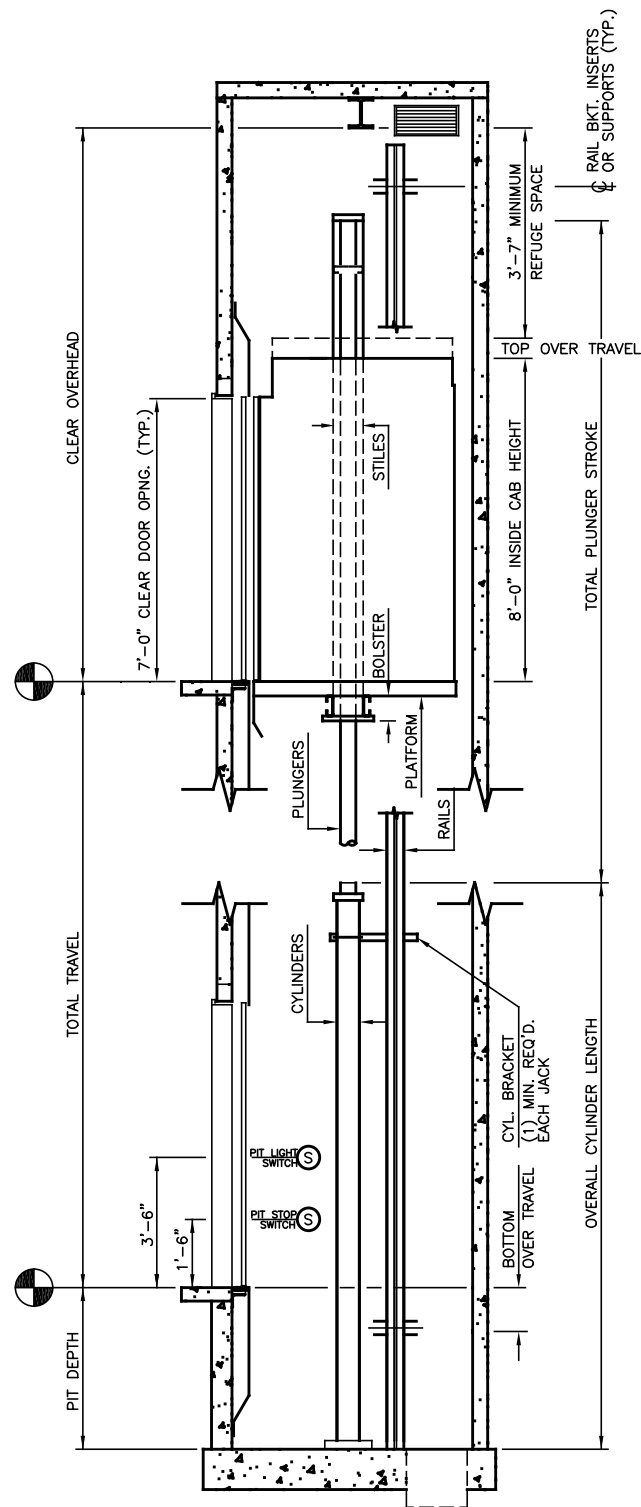
1. IF > 30' OF TRAVEL THEN AN ADDITIONAL 2" OF HOISTWAY WIDTH IS REQUIRED FOR LARGER JACKS.

# HOISTWAY PLAN

TWIN HOLELESS HYDRAULIC JACK  
2500 LB SSC0

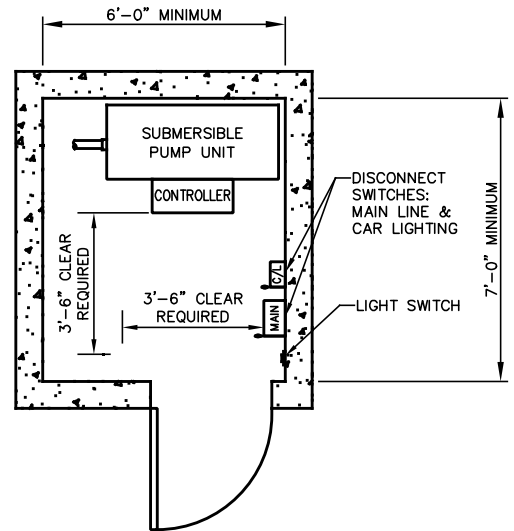
**NOT FOR CONSTRUCTION**

 <h2 style="margin: 0;">ALLIANCE</h2> <p style="margin: 0;">ELEVATOR SOLUTIONS</p> <p style="margin: 0;">237 OREGON ST.</p> <p style="margin: 0;">MERCERSBURG, PA 17236</p>		
N.T.S.	2 OF 3	2020



# SECTION "A"

**NOT FOR CONSTRUCTION**



# MACHINE ROOM

DEFAULT IS ADJACENT ON LOWEST LANDING

## MINIMUM OVERHEAD CHART

JACK STAGES	MIN OVERHEAD Ø100 FPM	MIN OVERHEAD Ø125 FPM	PIT DEPTH
1	12'-8"	12'-9"	4'-0"
2	13'-6"	13'-6"	4'-0"
3	13'-6"	13'-6"	5'-0"

# ALLIANCE

ELEVATOR SOLUTIONS

237 OREGON ST.

MERCERSBURG, PA 17236

N.T.S.

3 OF 3

2020