

NOTE

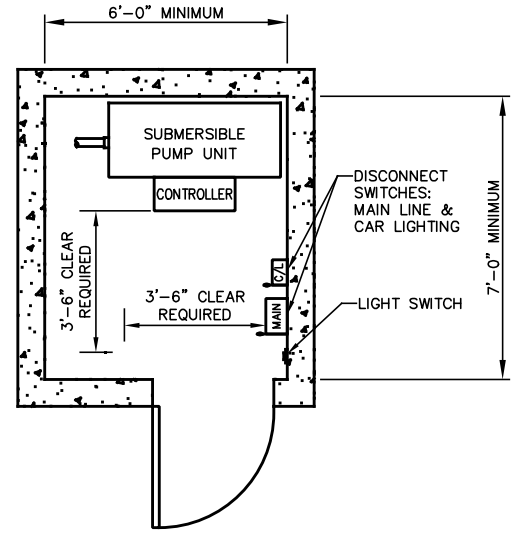
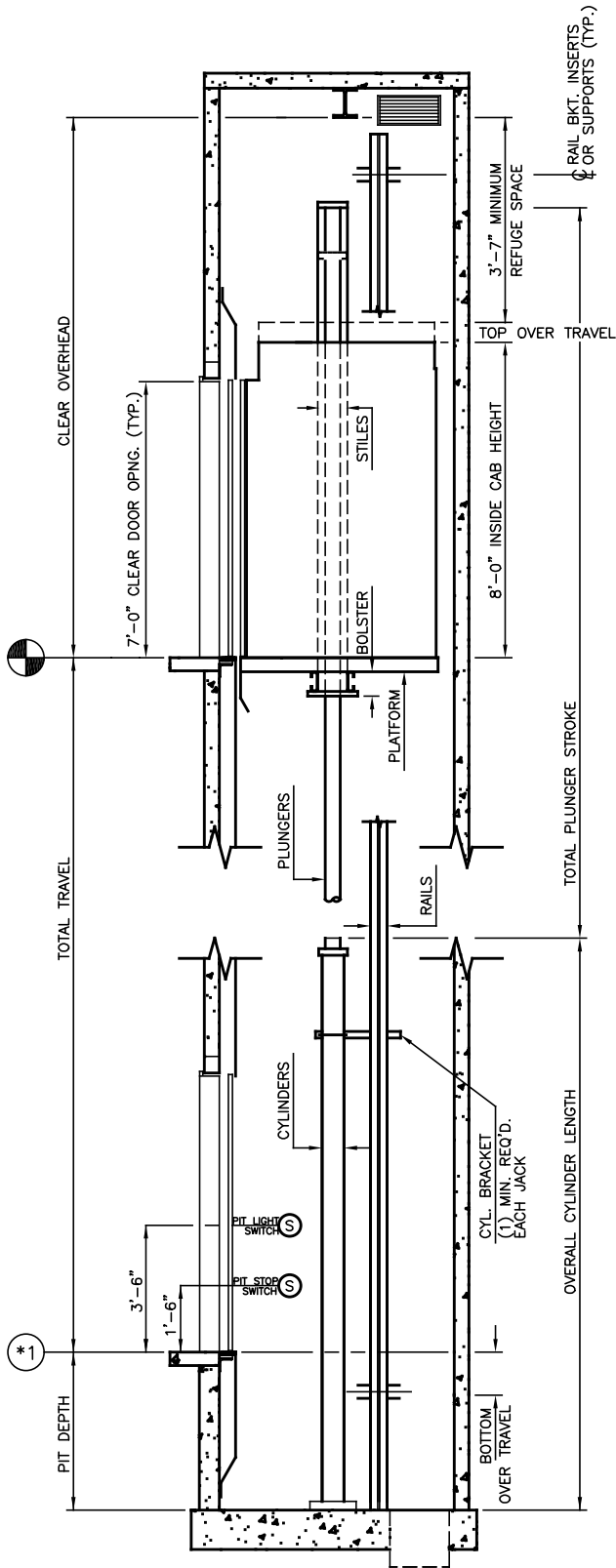
1. IF > 30' OF TRAVEL THEN AN ADDITIONAL 2" OF HOISTWAY WIDTH IS REQUIRED FOR LARGER JACKS.

# HOISTWAY PLAN

TWIN HOLELESS HYDRAULIC JACK  
2100 LB SSSO (LH)

**NOT FOR CONSTRUCTION**

**ALLIANCE**  
ELEVATOR SOLUTIONS  
237 OREGON ST.  
MERCERSBURG, PA 17236



# MACHINE ROOM

DEFAULT IS ADJACENT ON LOWEST LANDING

MINIMUM OVERHEAD CHART

JACK STAGES	MIN OVERHEAD @100 FPM	MIN OVERHEAD @125 FPM	PIT DEPTH
1	12'-8"	12'-9"	4'-0"
2	13'-6"	13'-6"	4'-0"
3	13'-6"	13'-6"	5'-0"

SECTION "A"  
NOT FOR CONSTRUCTION

**ALLIANCE**  
ELEVATOR SOLUTIONS  
237 OREGON ST.  
MERCERSBURG, PA 17236

N.T.S.	2 OF 2	2020
--------	--------	------