

ENGINEERING CONTACT: \_\_\_\_\_  
 COMPANY: \_\_\_\_\_  
 EMAIL: \_\_\_\_\_  
 FAX NO: \_\_\_\_\_

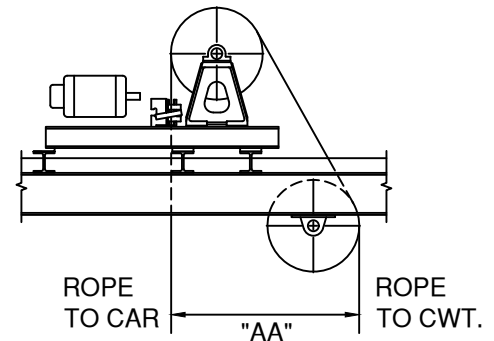
JOB NAME: \_\_\_\_\_  
 ELEV. #: \_\_\_\_\_ H-W #: \_\_\_\_\_  
 FROM (H-W): \_\_\_\_\_  
 DATE: \_\_\_\_\_

## INFORMATION REQUIRED TO MANUFACTURE GEARED OVERHEAD MACHINES

### GEARED MACHINES- OVERHEAD APPLICATION

**ENGINEERING INFORMATION:  
WE REQUIRE ALL MARKED ITEMS**

- CAPACITY: \_\_\_\_\_
- CAR SPEED: \_\_\_\_\_
- EMPTY CAR WEIGHT: \_\_\_\_\_
- HAND OF MACHINE:     LEFT     RIGHT
- ROPING:     1:1     2:1
- TRAVEL: \_\_\_\_\_
- HOIST ROPES: QUANTITY \_\_\_\_\_ SIZE \_\_\_\_\_
- PITCH OF HOIST ROPES (C.L. TO C.L. OF GROOVES ON FACE OF TRACTION SHEAVE): \_\_\_\_\_  
(H-W STANDARD PITCH IS: ROPE DIAMETER + 1/4")
- CERTIFIED OUTLINE DIMENSION PRINTS OF MOTOR WITH FULL LOAD R.P.M. INCLUDED
- MOTOR POWER SUPPLY: \_\_\_\_\_ VOLTAGE
- FOR EXISTING MOTORS ONLY, PLEASE FILL IN DIMENSIONS ON ENCLOSED BULLETIN #1109
- ASME A17 CODE COMPLIANCE TO WHICH YEAR REVISION: \_\_\_\_\_
- PRE 2013 CODE SEISMIC ZONE:     1     2A     2B     3     4
- DO YOU HAVE AN EXISTING DEFLECTOR SHEAVE:     YES     NO  
 IF NOT, WHAT DIAMETER TRACTION SHEAVE IS REQUIRED: \_\_\_\_\_
- DO THE HOIST ROPES DROP STRAIGHT DOWN TO THE CAR HITCH  
AS SHOWN IN SKETCH "A"?     YES     NO
- PROVIDE THE CAR TO CWT. ROPE DROP DISTANCE: \_\_\_\_\_  
(SEE SKETCH "A" - DIM. "AA")

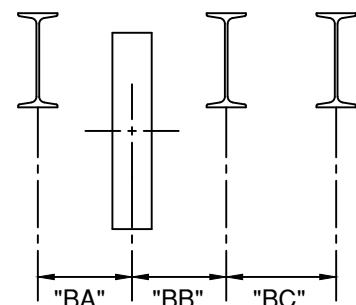


**SKETCH "A"**

### SHEAVES

- HOIST ROPES: QUANTITY \_\_\_\_\_ SIZE \_\_\_\_\_
- PITCH OF HOIST ROPES: \_\_\_\_\_
- BEAM / CHANNEL SIZE: \_\_\_\_\_" HIGH x \_\_\_\_\_" WIDE
- BEAM SPACING (SEE SKETCH "B" - DIM. "BA", "BB" & "BC")
- IF DEFLECTOR MOUNTING IN MACHINE ROOM SEE ATTACHED SURVEY E-147

**SKETCH "B"**



### MACHINE ISOLATION

- IS FLOOR SLAB EXISTING?     YES     NO
- FLOOR SLAB THICKNESS: \_\_\_\_\_  
ABOVE THE MACHINE BEAMS     YES     NO
- BEAM / CHANNEL SIZE: \_\_\_\_\_" HIGH x \_\_\_\_\_" WIDE
- BEAM SPACING (SEE SKETCH "B" - DIM. "BA", "BB" & "BC")

ENGINEERING CONTACT: \_\_\_\_\_  
COMPANY: \_\_\_\_\_  
EMAIL: \_\_\_\_\_  
FAX NO: \_\_\_\_\_

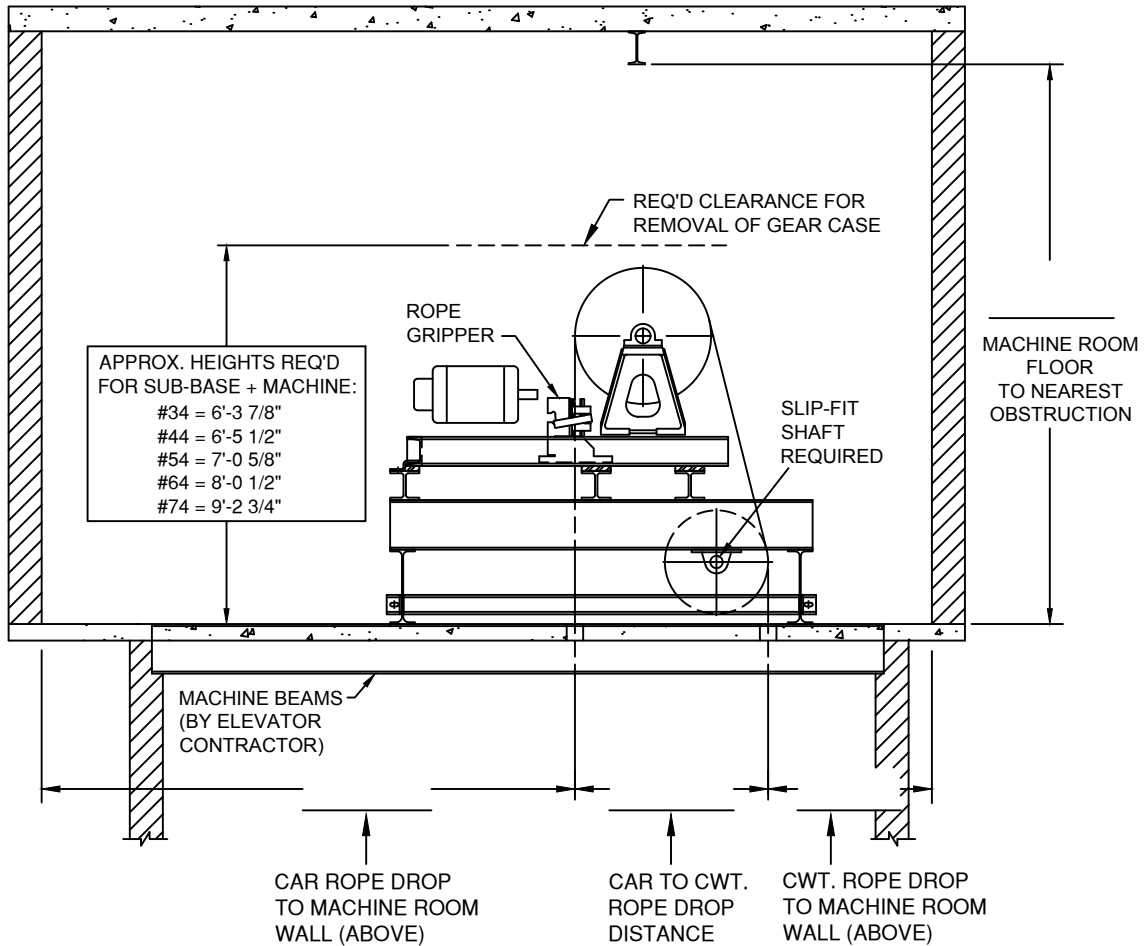
JOB NAME: \_\_\_\_\_  
ELEV. #: \_\_\_\_\_ H-W #: \_\_\_\_\_  
FROM (H-W): \_\_\_\_\_  
DATE: \_\_\_\_\_

**INFORMATION REQUIRED TO MANUFACTURE  
GEARED MACHINE BLOCK-UP ASSEMBLY**

**INSTRUCTIONS:**

1. FILL IN OPEN DIMENSIONS IN SKETCH BELOW.
2. EMPTY CAR WEIGHT: \_\_\_\_\_
3. PROVIDE MACHINE ROOM PLAN SKETCH.
  - a. SHOW LOCATION OF CAR AND CWT. RAILS.
  - b. PROVIDE MACHINE BEAM SPACING LOCATING CENTERLINE SHEAVE TO CENTERLINE OF MACHINE BEAMS.
  - c. MACHINE BEAM SIZE \_\_\_\_\_ HIGH x \_\_\_\_\_ WIDE

**ENGINEERING INFORMATION:  
WE REQUIRE ALL MARKED ITEMS**



ENGINEERING CONTACT: \_\_\_\_\_  
 COMPANY: \_\_\_\_\_  
 EMAIL: \_\_\_\_\_  
 FAX NO: \_\_\_\_\_

JOB NAME: \_\_\_\_\_  
 ELEV. #: \_\_\_\_\_ H-W #: \_\_\_\_\_  
 FROM (H-W): \_\_\_\_\_  
 DATE: \_\_\_\_\_

## INFORMATION REQUIRED TO MANUFACTURE GEARLESS OVERHEAD MACHINES

### GEARLESS MACHINES- OVERHEAD APPLICATION

**ENGINEERING INFORMATION:  
 WE REQUIRE ALL MARKED ITEMS**

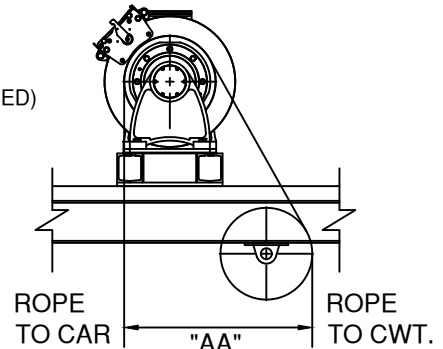
- CAPACITY: \_\_\_\_\_
- CAR SPEED: \_\_\_\_\_
- EMPTY CAR WEIGHT: \_\_\_\_\_
- ROPING:  1:1  2:1
- TRAVEL: \_\_\_\_\_
- HOIST ROPES: QUANTITY \_\_\_\_\_ SIZE \_\_\_\_\_
- PITCH OF HOIST ROPES (C.L. TO C.L. OF GROOVES ON FACE OF TRACTION SHEAVE): \_\_\_\_\_
- ARE YOU RETAINING AN EXISTING DEFLECTOR SHEAVE:  YES DIA. \_\_\_\_\_  NO  
 IF NOT, WHAT DIAMETER TRACTION SHEAVE IS REQUIRED:  15"DIA.  20"DIA.  25"DIA.
- PROVIDE THE CAR TO CWT. ROPE DROP DISTANCE (SEE SKETCH "A" - DIM "AA"): \_\_\_\_\_
- MACHINE POWER SUPPLY: \_\_\_\_\_ VOLTAGE
- CONTROLLER MANUFACTURER: \_\_\_\_\_
- DRIVE MANUFACTURER:  KEB  MAGNETEK  OTHER (CABLE BY CUSTOMER)
- IS MANUAL BRAKE RELEASE CABLE REQUIRED?  YES  NO  
 IF SO, SPECIFY LENGTH (STANDARD IS 8'-0"): \_\_\_\_\_  
 (IF USING G.A.L. CONTROL, CONFIRM WITH THEM IF BRAKE RELEASE CABLE IS REQUIRED)
- ENCODER CABLE LENGTH (STANDARD IS 20 METER [65.6'] ): \_\_\_\_\_
- ASME A17 CODE COMPLIANCE TO WHICH YEAR REVISION: \_\_\_\_\_
- PRE 2013 CODE SEISMIC ZONE:  1  2A  2B  3  4

### SHEAVES

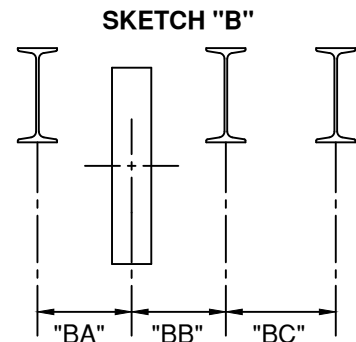
- HOIST ROPES: QUANTITY \_\_\_\_\_ SIZE \_\_\_\_\_
- PITCH OF HOIST ROPES: \_\_\_\_\_
- BEAM SPACING (SEE SKETCH "B" - DIMENSION "BA", "BB" & "BC")
- IF DEFLECTOR MOUNTING IN MACHINE ROOM SEE ATTACHED SURVEY E-147

### MACHINE ISOLATION

- IS FLOOR SLAB EXISTING?  YES  NO
- FLOOR SLAB THICKNESS: \_\_\_\_\_  
 ABOVE THE MACHINE BEAMS  YES  NO
- BEAM / CHANNEL SIZE: \_\_\_\_\_" HIGH x \_\_\_\_\_" WIDE
- BEAM SPACING (SEE SKETCH "B" - DIMENSION "BA", "BB" & "BC")



**SKETCH "A"**



**SKETCH "B"**

ENGINEERING CONTACT: \_\_\_\_\_  
COMPANY: \_\_\_\_\_  
EMAIL: \_\_\_\_\_  
FAX NO: \_\_\_\_\_

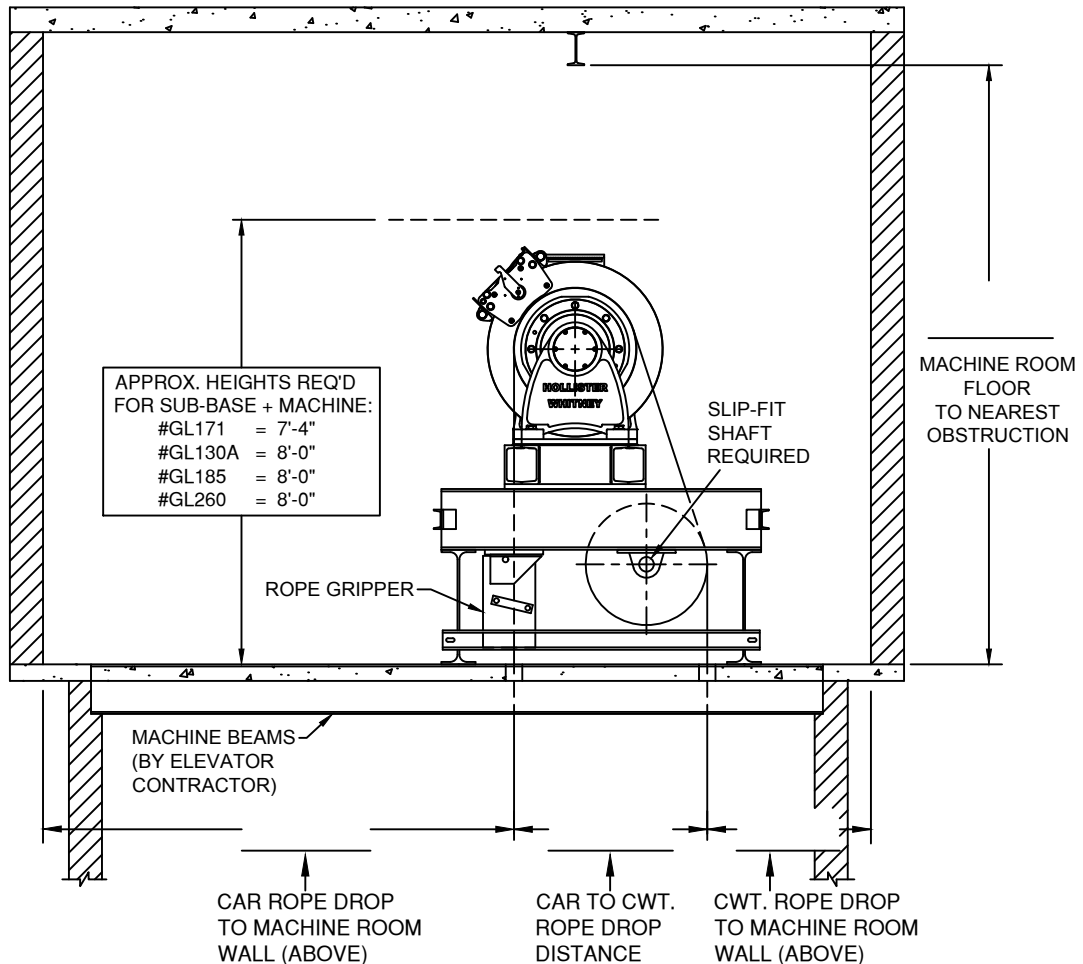
JOB NAME: \_\_\_\_\_  
ELEV. #: \_\_\_\_\_ H-W #: \_\_\_\_\_  
FROM (H-W): \_\_\_\_\_  
DATE: \_\_\_\_\_

**INFORMATION REQUIRED TO MANUFACTURE  
GEARLESS MACHINE BLOCK-UP ASSEMBLY**

**INSTRUCTIONS:**

1. FILL IN OPEN DIMENSIONS IN SKETCH BELOW.
2. EMPTY CAR WEIGHT: \_\_\_\_\_
3. HAND OF BLOCK-UP ASSEMBLY:  LEFT  RIGHT  
LEFT HAND - DEFLECTOR TO LEFT OF MACHINE WHEN LOOKING AT TRACTION SHEAVE (OPPOSITE OF ABOVE)  
RIGHT HAND - DEFLECTOR TO RIGHT OF MACHINE WHEN LOOKING AT TRACTION SHEAVE (AS SHOWN ABOVE)
4. PROVIDE MACHINE ROOM PLAN SKETCH.
  - a. SHOW LOCATION OF CAR AND CWT. RAILS.
  - b. PROVIDE MACHINE BEAM SPACING LOCATING CENTERLINE SHEAVE TO CENTERLINE OF MACHINE BEAMS.
  - c. MACHINE BEAM SIZE \_\_\_\_\_ HIGH x \_\_\_\_\_ WIDE

**ENGINEERING INFORMATION:  
WE REQUIRE ALL MARKED ITEMS**



ENGINEERING CONTACT: \_\_\_\_\_  
 COMPANY: \_\_\_\_\_  
 EMAIL: \_\_\_\_\_  
 FAX NO: \_\_\_\_\_

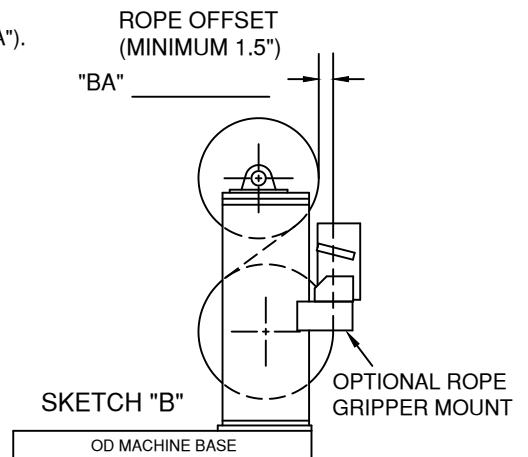
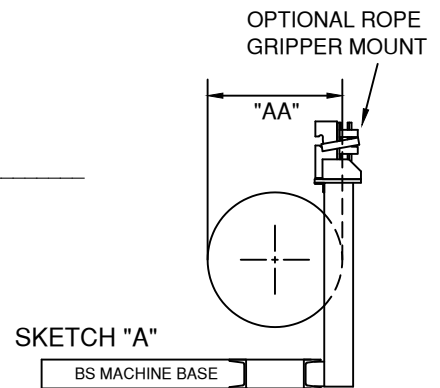
JOB NAME: \_\_\_\_\_  
 ELEV. #: \_\_\_\_\_ H-W #: \_\_\_\_\_  
 FROM (H-W): \_\_\_\_\_  
 DATE: \_\_\_\_\_

## INFORMATION REQUIRED TO MANUFACTURE GEARED BASEMENT SET MACHINES

### GEARED MACHINES- BASEMENT APPLICATION

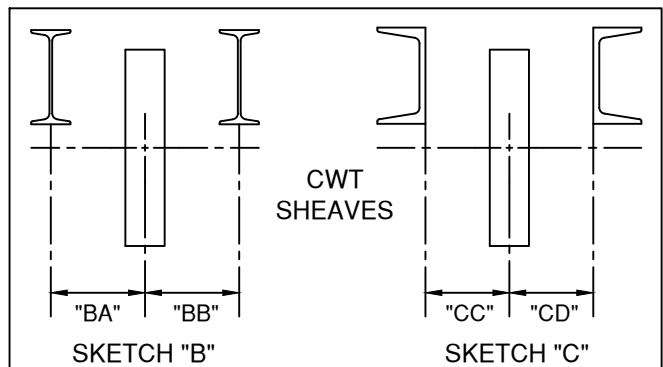
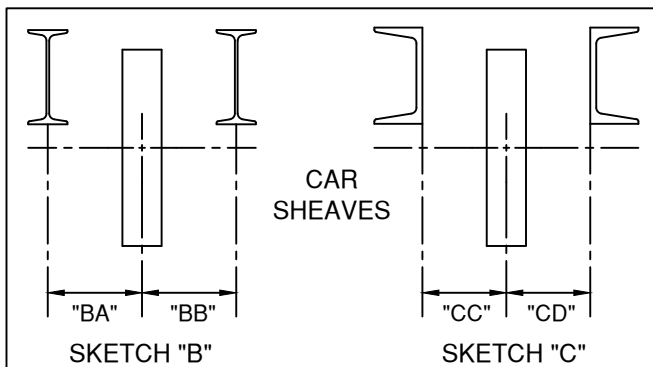
- CAPACITY: \_\_\_\_\_
- CAR SPEED: \_\_\_\_\_
- EMPTY CAR WEIGHT: \_\_\_\_\_
- HAND OF MACHINE:     LEFT     RIGHT
- ROPING:     1:1     2:1
- TRAVEL: \_\_\_\_\_
- HOIST ROPES: QUANTITY \_\_\_\_\_ SIZE \_\_\_\_\_
- PITCH OF HOIST ROPES (C.L. TO C.L. OF GROOVES ON FACE OF TRACTION SHEAVE): \_\_\_\_\_  
 (H-W STANDARD PITCH IS: ROPE DIAMETER + 1/4")
- CERTIFIED OUTLINE DIMENSION PRINTS OF MOTOR WITH FULL LOAD R.P.M. INCLUDED
- MOTOR POWER SUPPLY: \_\_\_\_\_ VOLTAGE
- FOR EXISTING MOTORS ONLY, PLEASE FILL IN DIMENSIONS ON ENCLOSED BULLETIN #1109
- ASME A17 CODE COMPLIANCE TO WHICH YEAR REVISION: \_\_\_\_\_
- PRE 2013 CODE SEISMIC ZONE:     1     2A     2B     3     4
- "BS" BASEMENT MACHINES, WHAT TRACTION SHEAVE DIAMETER IS REQUIRED: \_\_\_\_\_  
 (SEE SKETCH "A" - DIMENSION "AA")
- "OD" BASEMENT MACHINES, PROVIDE ROPE OFFSET (SEE SKETCH "B" - DIMENSION "BA").
- IS ROPE GRIPPER MOUNTING REQUIRED ON THE MACHINE:     YES     NO

**ENGINEERING INFORMATION:  
 WE REQUIRE ALL MARKED ITEMS**



### SHEAVES (OVERHEAD/CAR/CWT.)

- QUANTITY: CAR SHEAVES \_\_\_\_\_ CWT. SHEAVES \_\_\_\_\_
- DIAMETER: CAR SHEAVES \_\_\_\_\_ CWT. SHEAVES \_\_\_\_\_
- HOIST ROPES: QUANTITY \_\_\_\_\_
- HOIST ROPES: SIZE \_\_\_\_\_
- PITCH OF HOIST ROPES: \_\_\_\_\_
- CAR BEAM / CHANNEL SIZE: \_\_\_\_\_" HIGH x \_\_\_\_\_" WIDE
- CWT BEAM / CHANNEL SIZE: \_\_\_\_\_" HIGH x \_\_\_\_\_" WIDE
- CAR & CWT BEAM / CHANNEL SPACING :
- BEAMS - SKETCH "B" - DIMENSIONS "BA"/ "BB"
- CHANNELS - SKETCH "C" - DIMENSIONS "CC"/ "CD"



ENGINEERING CONTACT: \_\_\_\_\_  
 COMPANY: \_\_\_\_\_  
 EMAIL: \_\_\_\_\_  
 FAX NO: \_\_\_\_\_

JOB NAME: \_\_\_\_\_  
 ELEV. #: \_\_\_\_\_ H-W #: \_\_\_\_\_  
 FROM (H-W): \_\_\_\_\_  
 DATE: \_\_\_\_\_

## INFORMATION REQUIRED TO MANUFACTURE GEARLESS BASEMENT MACHINES

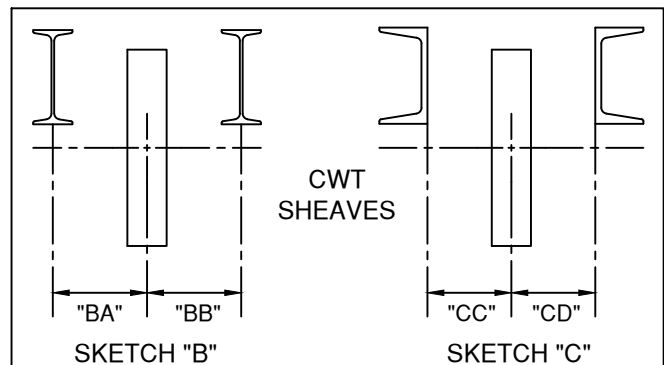
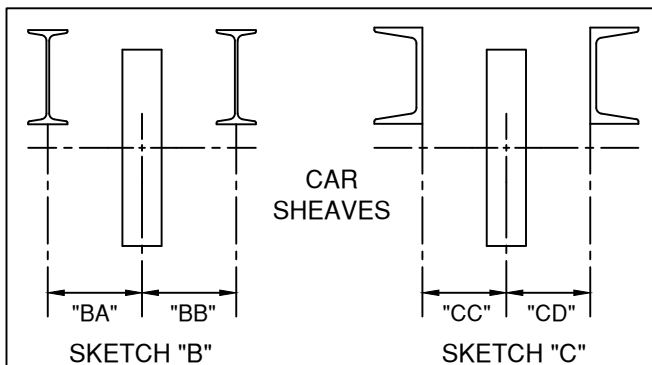
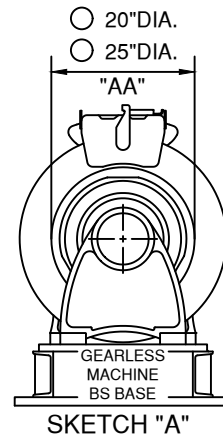
### GEARLESS MACHINES- BASEMENT APPLICATION

- CAPACITY: \_\_\_\_\_
- CAR SPEED: \_\_\_\_\_
- EMPTY CAR WEIGHT: \_\_\_\_\_
- ROPING:  1:1  2:1
- TRAVEL: \_\_\_\_\_
- HOIST ROPES: QUANTITY \_\_\_\_\_ SIZE \_\_\_\_\_
- PITCH OF HOIST ROPES (C.L. TO C.L. OF GROOVES ON FACE OF TRACTION SHEAVES): \_\_\_\_\_  
(H-W STANDARD PITCH IS: ROPE DIAMETER + 1/4")
- MACHINE POWER SUPPLY: \_\_\_\_\_ VOLTAGE
- CONTROLLER MANUFACTURER: \_\_\_\_\_
- DRIVE MANUFACTURER:  KEB  MAGNETEK  OTHER (CABLE BY CUSTOMER)
- IS MANUAL BRAKE RELEASE CABLE REQUIRED?  YES  NO
- IF SO, SPECIFY LENGTH (STANDARD IS 8'-0"): \_\_\_\_\_  
(IF USING G.A.L. CONTROL, CONFIRM WITH THEM IF BRAKE RELEASE CABLE IS REQUIRED)
- ENCODER CABLE LENGTH (STANDARD IS 20 METER [65.6'] ): \_\_\_\_\_
- ASME A17 CODE COMPLIANCE TO WHICH YEAR REVISION: \_\_\_\_\_
- PRE 2013 CODE SEISMIC ZONE:  1  2A  2B  3  4
- WHAT TRACTION SHEAVE DIAMETER IS REQUIRED (SEE SKETCH "A" - DIM. "AA") :

**ENGINEERING INFORMATION:**  
**WE REQUIRE ALL MARKED ITEMS**

### SHEAVES (OVERHEAD/CAR/CWT.)

- QUANTITY: CAR SHEAVES \_\_\_\_\_ CWT. SHEAVES \_\_\_\_\_
  - DIAMETER: CAR SHEAVES \_\_\_\_\_ CWT. SHEAVES \_\_\_\_\_
  - HOIST ROPES: QUANTITY \_\_\_\_\_
  - HOIST ROPES: SIZE \_\_\_\_\_
  - PITCH OF HOIST ROPES: \_\_\_\_\_
  - CAR BEAM / CHANNEL SIZE: \_\_\_\_\_" HIGH x \_\_\_\_\_" WIDE
  - CWT BEAM / CHANNEL SIZE: \_\_\_\_\_" HIGH x \_\_\_\_\_" WIDE
  - CAR & CWT BEAM / CHANNEL SPACING :
- BEAMS - SKETCH "B" - DIMENSIONS "BA"/ "BB"  
 CHANNELS - SKETCH "C" - DIMENSIONS "CC"/ "CD"



ENGINEERING CONTACT: \_\_\_\_\_  
 COMPANY: \_\_\_\_\_  
 EMAIL: \_\_\_\_\_  
 FAX NO: \_\_\_\_\_

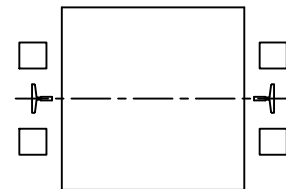
JOB NAME: \_\_\_\_\_  
 ELEV. #: \_\_\_\_\_ H-W #: \_\_\_\_\_  
 FROM (H-W): \_\_\_\_\_  
 DATE: \_\_\_\_\_

## INFORMATION REQUIRED TO MANUFACTURE SMALL COMPONENTS

### SAFETIES

- EMPTY CAR WEIGHT: \_\_\_\_\_
- CAPACITY: \_\_\_\_\_
- COMPENSATION WEIGHT (IF APPLICABLE): \_\_\_\_\_
- CAR SPEED: \_\_\_\_\_
- FACE TO FACE OF GUIDE RAILS: \_\_\_\_\_
- RAIL SIZE (IN LBS.): \_\_\_\_\_
- GOVERNOR LOCATION (SHOW ON SKETCH "D")
- STILE SIZE: \_\_\_\_\_

**ENGINEERING INFORMATION:  
WE REQUIRE ALL MARKED ITEMS**



FRONT  
**SKETCH "D"**

### GOVERNORS

- CAR SPEED: \_\_\_\_\_
- TRIPPING SPEED: \_\_\_\_\_
- SHEAVE DIAMETER:  12"DIA.  16"DIA.
- GOVERNOR ROPE DIAMETER:  3/8"DIA.  1/2"DIA.
- GOVERNOR PULL-THRU (IN LBS.): \_\_\_\_\_ OR  
TYPE OF EXIST. SAFETY (DRUM, GRADUAL, ETC.): \_\_\_\_\_
- HAND OR LOCATION (SHOW ON SKETCH "D")
- LIVE SHAFT DIAMETER:  12mm  0.25"  0.75"  1.00"

### TENSION WEIGHTS

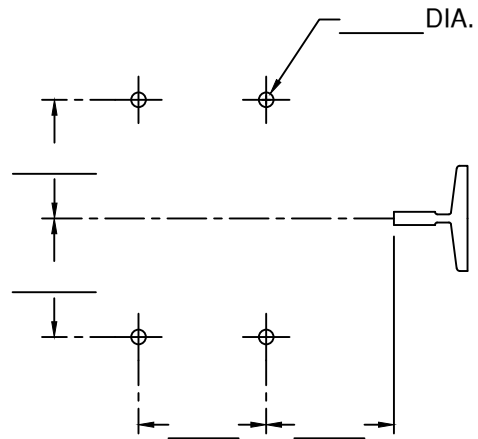
- RAIL SIZE (IN LBS.): \_\_\_\_\_
- SHEAVE DIAMETER:  12"DIA.  16"DIA.
- GOVERNOR ROPE DIAMETER:  3/8"DIA.  1/2"DIA.

### SHOES AND PLATES

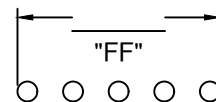
- SHOE TYPE: \_\_\_\_\_ MANUFACTURER: \_\_\_\_\_
- RAIL SIZE (IN LBS.): \_\_\_\_\_
- TEMPLATE (FILL IN ALL DIMENSIONS ON SKETCH "E")

### ROPE GRIPPERS

- EMPTY CAR WEIGHT: \_\_\_\_\_
- CAPACITY: \_\_\_\_\_
- COMPENSATION WEIGHT (IF APPLICABLE): \_\_\_\_\_
- CAR SPEED: \_\_\_\_\_
- ROPING:  1:1  2:1
- HOIST ROPES: QUANTITY \_\_\_\_\_ SIZE \_\_\_\_\_
- OUT-TO-OUT OF HOIST ROPES (SEE SKETCH "F" - DIM. "FF"): \_\_\_\_\_
- LENGTH OF HYDRAULIC HOSE REQUIRED:
  - STANDARD (27")
  - 4'-0"  5'-0"  6'-0"  8'-0"
  - CUSTOM (UP TO 30'-0"): \_\_\_\_\_



**SKETCH "E"**



**SKETCH "F"**

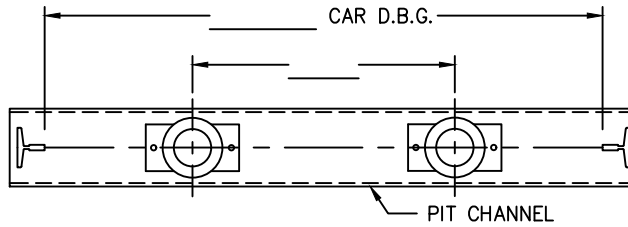
ENGINEERING CONTACT: \_\_\_\_\_  
 COMPANY: \_\_\_\_\_  
 EMAIL: \_\_\_\_\_  
 FAX NO: \_\_\_\_\_

JOB NAME: \_\_\_\_\_  
 ELEV. #: \_\_\_\_\_ H-W #: \_\_\_\_\_  
 FROM (H-W): \_\_\_\_\_  
 DATE: \_\_\_\_\_

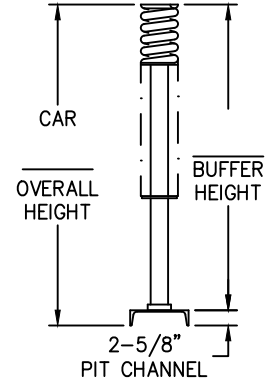
## INFORMATION REQUIRED TO MANUFACTURE BUFFERS & PIT CHANNELS

- DUTY -  
 SPEED: \_\_\_\_\_  CAPACITY: \_\_\_\_\_
- CAR: PLEASE PROVIDE -  
 D.B.G.: \_\_\_\_\_  
 RAIL SIZE: \_\_\_\_\_ (IN LBS.)  
 CAR WEIGHT: \_\_\_\_\_  
 BUFFER HEIGHT: \_\_\_\_\_  
 OVERALL HEIGHT: \_\_\_\_\_  
 DISTANCE BETWEEN BUFFERS: \_\_\_\_\_

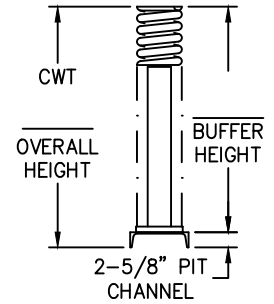
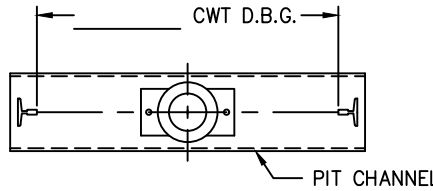
**ENGINEERING INFORMATION:  
 WE REQUIRE ALL MARKED ITEMS**



### SPRING BUFFERS

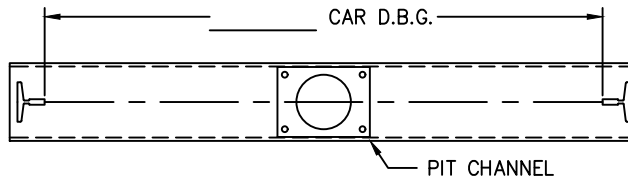


- CWT: PLEASE PROVIDE -  
 D.B.G.: \_\_\_\_\_  
 RAIL SIZE: \_\_\_\_\_ (IN LBS.)  
 CWT. WEIGHT: \_\_\_\_\_  
 BUFFER HEIGHT: \_\_\_\_\_  
 OVERALL HEIGHT: \_\_\_\_\_

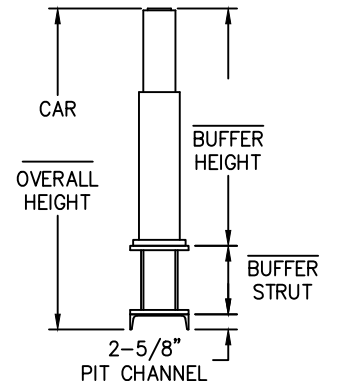


- PIT CHANNELS REQUIRED?  CAR  CWT
- HW PIT CHANNELS NORMALLY MOUNT UNDER THE THE GUIDE RAILS OR THEY CAN BE CUT SHORT. ADVISE WHICH OPTION -  
 NORMAL UNDER RAIL MOUNTING.  CUT SHORT OF GUIDE RAILS

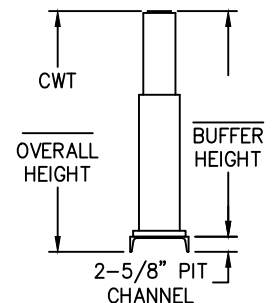
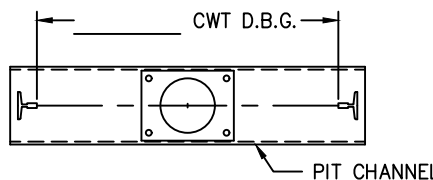
- DUTY -  
 SPEED: \_\_\_\_\_  CAPACITY: \_\_\_\_\_
- CAR: PLEASE PROVIDE -  
 D.B.G.: \_\_\_\_\_  
 RAIL SIZE: \_\_\_\_\_ (IN LBS.)  
 CAR WEIGHT: \_\_\_\_\_  
 BUFFER HEIGHT: \_\_\_\_\_  
 OVERALL HEIGHT: \_\_\_\_\_



### OIL BUFFERS



- CWT: PLEASE PROVIDE -  
 D.B.G.: \_\_\_\_\_  
 RAIL SIZE: \_\_\_\_\_ (IN LBS.)  
 CWT. WEIGHT: \_\_\_\_\_  
 BUFFER HEIGHT: \_\_\_\_\_  
 OVERALL HEIGHT: \_\_\_\_\_



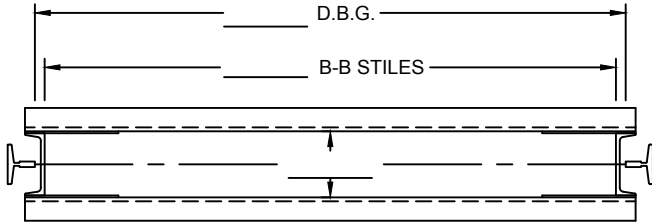
- PIT CHANNELS REQUIRED?  CAR  CWT
- HW PIT CHANNELS NORMALLY MOUNT UNDER THE THE GUIDE RAILS OR THEY CAN BE CUT SHORT. ADVISE WHICH OPTION -  
 NORMAL UNDER RAIL MOUNTING.  CUT SHORT OF GUIDE RAILS



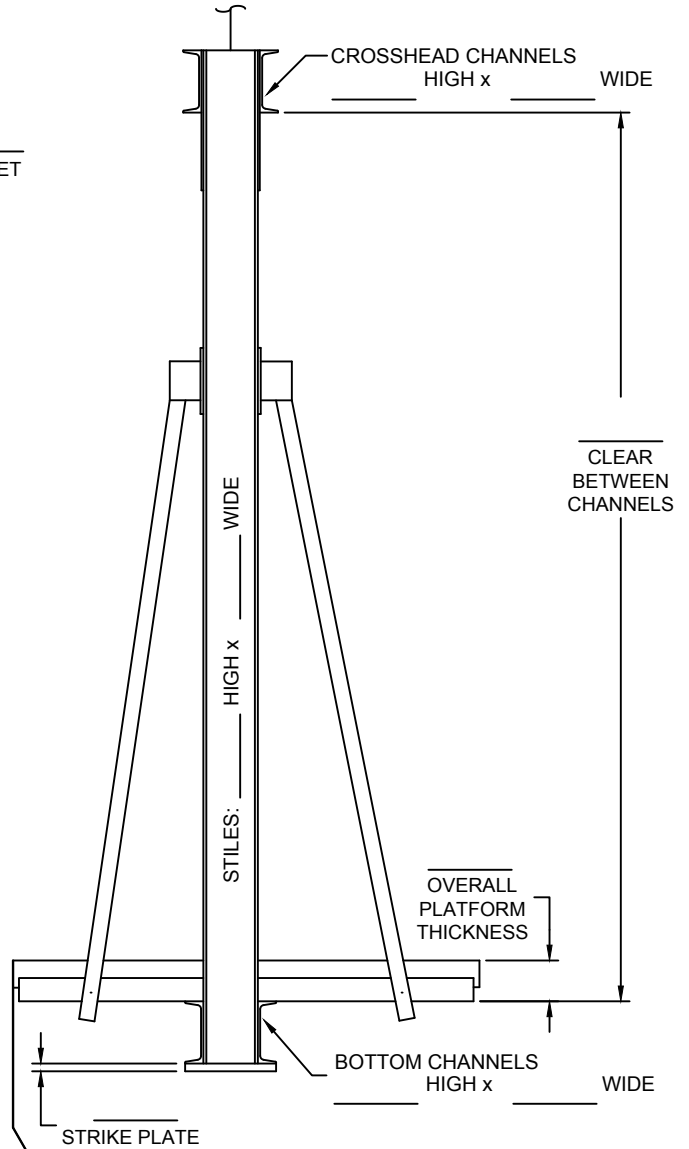
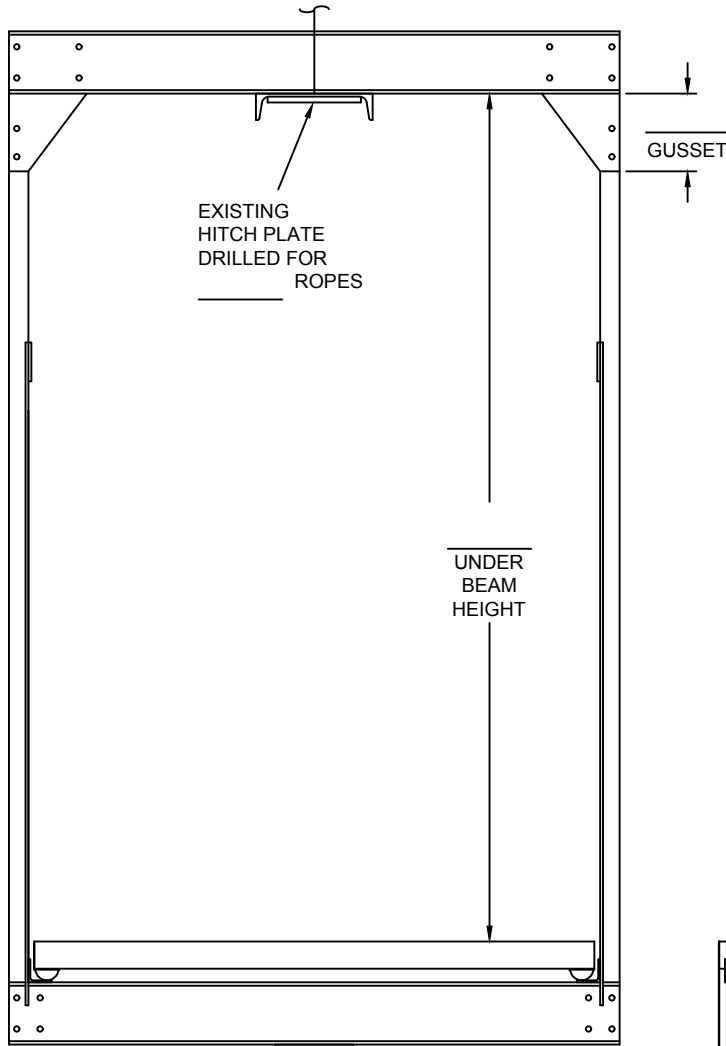
ENGINEERING CONTACT: \_\_\_\_\_  
COMPANY: \_\_\_\_\_  
EMAIL: \_\_\_\_\_  
FAX NO: \_\_\_\_\_

JOB NAME: \_\_\_\_\_  
ELEV. #: \_\_\_\_\_ H-W #: \_\_\_\_\_  
FROM (H-W): \_\_\_\_\_  
DATE: \_\_\_\_\_

**INFORMATION REQUIRED TO MANUFACTURE**  
**1:1 ROPED CAR SLINGS**



**ENGINEERING INFORMATION:**  
**WE REQUIRE ALL MARKED ITEMS**



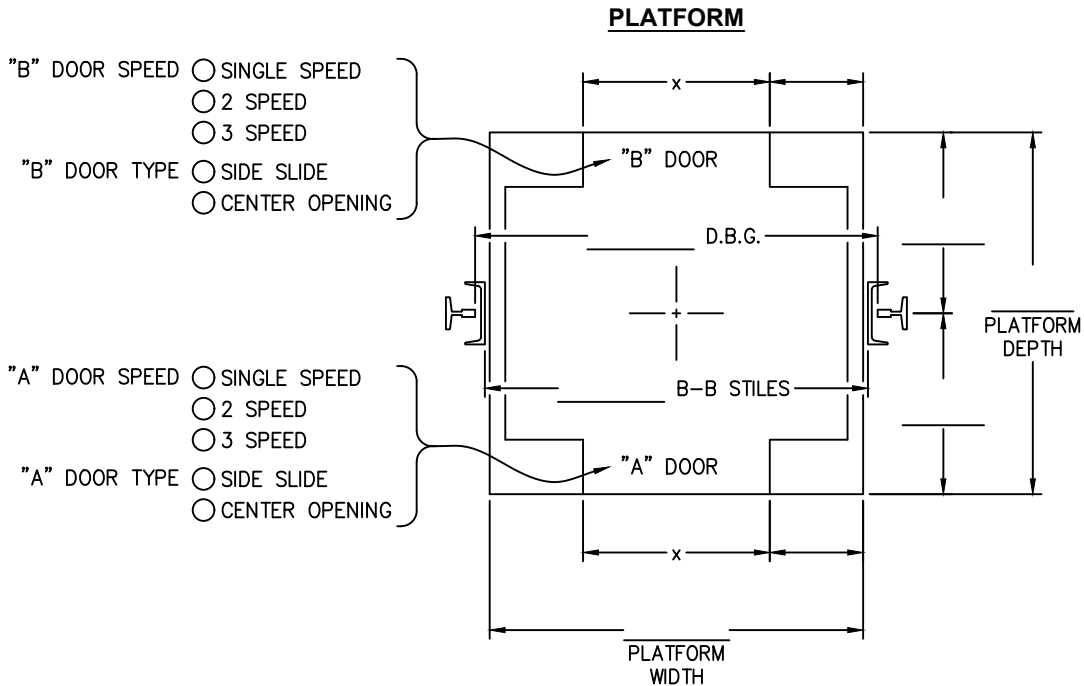
**WEIGHTS / DUTY**

CAR SPEED: \_\_\_\_\_ CAPACITY RATING: \_\_\_\_\_ TOTAL EMPTY CAR WEIGHT: \_\_\_\_\_  
LOAD CLASSIFICATION:  PASSENGER -OR- CLASS:  A  B  C1  C2  C3

ENGINEERING CONTACT: \_\_\_\_\_  
COMPANY: \_\_\_\_\_  
EMAIL: \_\_\_\_\_  
FAX NO: \_\_\_\_\_

JOB NAME: \_\_\_\_\_  
ELEV. #: \_\_\_\_\_ H-W #: \_\_\_\_\_  
FROM (H-W): \_\_\_\_\_  
DATE: \_\_\_\_\_

**INFORMATION REQUIRED TO MANUFACTURE  
SIDE-POST PLATFORMS**



**REQUIRE INFORMATION MARKED BELOW:**

**ENGINEERING INFORMATION:  
WE REQUIRE ALL MARKED ITEMS**

- TOTAL EMPTY CAR WEIGHT: \_\_\_\_\_
- CAPACITY RATING: \_\_\_\_\_
- LOAD CLASSIFICATION:  PASSENGER -OR- CLASS:  A  B  C1  C2  C3
- DISTANCE BETWEEN GUIDES (D.B.G.): \_\_\_\_\_
- BACK TO BACK OF CAR SLING STILES: \_\_\_\_\_
- NUMBER OF DOOR OPENINGS: \_\_\_\_\_
- SPEED OF DOOR(S) -
  - "A" DOOR;  SINGLE,  2-SPEED,  3-SPEED
  - "B" DOOR;  SINGLE,  2-SPEED,  3-SPEED
- TYPE OF DOOR(S) -
  - "A" DOOR;  SIDE SLIDE  CENTER OPENING
  - "B" DOOR;  SIDE SLIDE  CENTER OPENING
- SIZE OF THE DOOR(S) -
  - "A" DOOR; WIDTH: \_\_\_\_\_ BY HEIGHT: \_\_\_\_\_
  - "B" DOOR; WIDTH: \_\_\_\_\_ BY HEIGHT: \_\_\_\_\_
- LOCATION OF THE DOOR(S) BY FILLING IN THE DIMENSIONS ON ABOVE SKETCH.
- IF ALL STEEL PLATFORM, CAR SILL DETAIL IS REQUIRED: \_\_\_\_\_

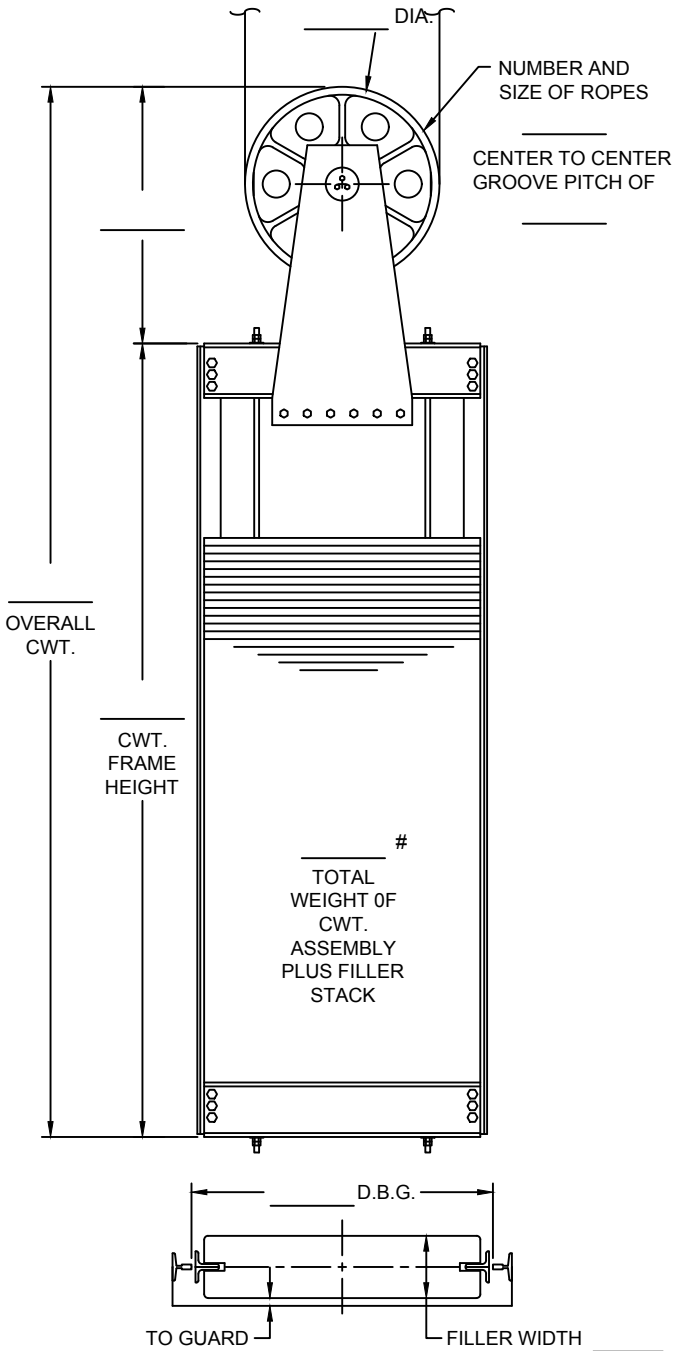
ENGINEERING CONTACT: \_\_\_\_\_  
COMPANY: \_\_\_\_\_  
EMAIL: \_\_\_\_\_  
FAX NO: \_\_\_\_\_

JOB NAME: \_\_\_\_\_  
ELEV. #: \_\_\_\_\_ H-W #: \_\_\_\_\_  
FROM (H-W): \_\_\_\_\_  
DATE: \_\_\_\_\_

**INFORMATION REQUIRED TO MANUFACTURE  
COUNTERWEIGHT FRAMES**

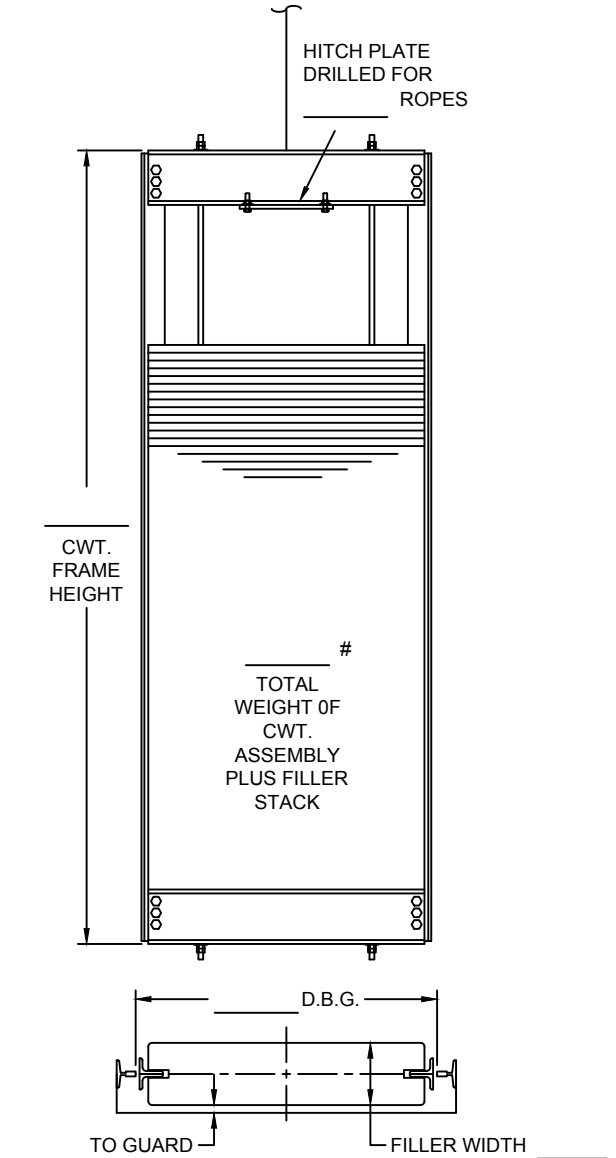
- CWT. RAIL SIZE (IN LBS) \_\_\_\_\_
- CWT. SHOE MANUFACTURER \_\_\_\_\_

**COUNTERWEIGHT WITH SHEAVE**



**ENGINEERING INFORMATION:  
WE REQUIRE ALL MARKED ITEMS**

**COUNTERWEIGHT WITHOUT SHEAVE**

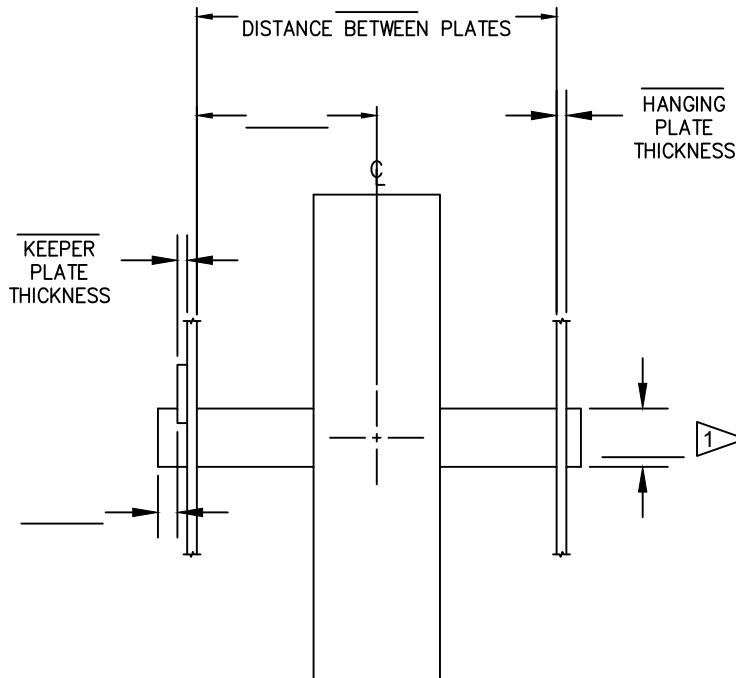


ENGINEERING CONTACT: \_\_\_\_\_  
COMPANY: \_\_\_\_\_  
EMAIL: \_\_\_\_\_  
FAX NO: \_\_\_\_\_

JOB NAME: \_\_\_\_\_  
ELEV. #: \_\_\_\_\_ H-W #: \_\_\_\_\_  
FROM (H-W): \_\_\_\_\_  
DATE: \_\_\_\_\_

**INFORMATION REQUIRED TO MANUFACTURE**  
**HANGING SHEAVES**

**ENGINEERING INFORMATION:  
WE REQUIRE ALL MARKED ITEMS**



**PROVIDE OPEN DIMENSIONS ABOVE**

1 HW TYPICAL SHAFT DIAMETER FOR HEAVY DUTY DEFLECTOR, CAR, CWT, AND OVERHEAD SHEAVES IS 3.438" - 3.440. IF YOU REQUIRE A SMALLER DIAMETER FOR YOUR EXISTING CONDITIONS, PROVIDE YOUR SHAFT DIAMETER IN NEAREST THOUSANDTHS.